



**INTERNATIONAL  
GEMOLOGICAL  
INSTITUTE**

**ELECTRONIC COPY**

**LABORATORY GROWN  
DIAMOND REPORT**

**LG608361783**

**IGI LABORATORY GROWN  
DIAMOND ID REPORT**

November 22, 2023

IGI Report Number **LG608361783**

**PRINCESS CUT**

**4.40 X 4.33 X 3.08 MM**

|                |             |
|----------------|-------------|
| Carat Weight   | 0.53 CARAT  |
| Color Grade    | D           |
| Clarity Grade  | VVS 2       |
| Polish         | EXCELLENT   |
| Symmetry       | VERY GOOD   |
| Fluorescence   | NONE        |
| Inscription(s) | LG608361783 |

Comments: As Grown - No indication of post-growth treatment. This Laboratory Grown Diamond was created by High Pressure High Temperature (HPHT) growth process. Type II

**LABORATORY GROWN DIAMOND REPORT**

**IGI LABORATORY GROWN DIAMOND IDENTIFICATION REPORT**

November 22, 2023

IGI Report Number

LG608361783

Description

LABORATORY GROWN DIAMOND

Shape and Cutting Style

PRINCESS CUT

Measurements

4.40 X 4.33 X 3.08 MM

**GRADING RESULTS**

Carat Weight

0.53 CARAT

Color Grade

D

Clarity Grade

VVS 2

**ADDITIONAL GRADING INFORMATION**

Polish

EXCELLENT

Symmetry

VERY GOOD

Fluorescence

NONE

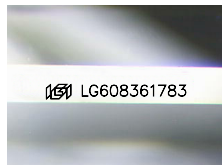
Inscription(s)

LG608361783

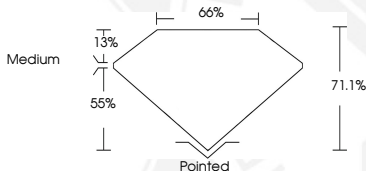
Comments: As Grown - No indication of post-growth treatment.

This Laboratory Grown Diamond was created by High Pressure High Temperature (HPHT) growth process.

Type II



Sample Image Used



**IGI LABORATORY GROWN  
DIAMOND ID REPORT**

November 22, 2023

IGI Report Number **LG608361783**

**PRINCESS CUT**

**4.40 X 4.33 X 3.08 MM**

|                |             |
|----------------|-------------|
| Carat Weight   | 0.53 CARAT  |
| Color Grade    | D           |
| Clarity Grade  | VVS 2       |
| Polish         | EXCELLENT   |
| Symmetry       | VERY GOOD   |
| Fluorescence   | NONE        |
| Inscription(s) | LG608361783 |

Comments: As Grown - No indication of post-growth treatment. This Laboratory Grown Diamond was created by High Pressure High Temperature (HPHT) growth process. Type II

THIS DOCUMENT WAS PRODUCED WITH THE FOLLOWING SECURITY MEASURES: SPECIAL DOCUMENT PAPER, INK SCREENS, WATERMARK, BACKGROUND DESIGN, HOLOGRAM AND OTHER SECURITY FEATURES NOT LISTED AND DO EXCEED DOCUMENT SECURITY INDUSTRY GUIDELINES.

For terms & conditions and to verify this report, please visit [www.igi.org](http://www.igi.org)