



**ELECTRONIC COPY**

LG610340819  
Report verification at igi.org

**LABORATORY GROWN DIAMOND REPORT**

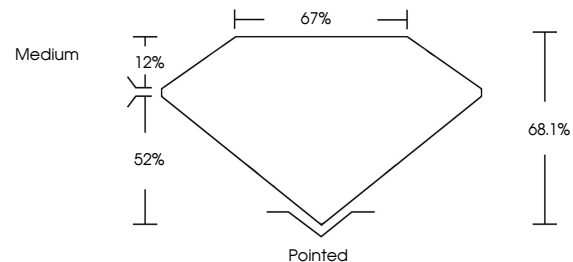
December 11, 2023  
IGI Report Number **LG610340819**  
Description **LABORATORY GROWN  
DIAMOND**  
Shape and Cutting Style **SQUARE EMERALD CUT**  
Measurements **6.99 X 6.90 X 4.70 MM**  
**GRADING RESULTS**  
Carat Weight **2.05 CARATS**  
Color Grade **E**  
Clarity Grade **VVS 2**

**ADDITIONAL GRADING INFORMATION**

Polish **EXCELLENT**  
Symmetry **EXCELLENT**  
Fluorescence **NONE**  
Inscription(s) **IGI LG610340819**

Comments: This Laboratory Grown Diamond was created by Chemical Vapor Deposition (CVD) growth process and may include post-growth treatment. Type IIa

**PROPORTIONS**



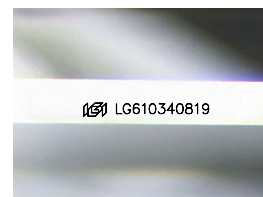
**GRADING SCALES**

**CLARITY**

IF	VVS <sup>1-2</sup>	VS <sup>1-2</sup>	SI <sup>1-2</sup>	I <sup>1-3</sup>
Internally Flawless	Very Very Slightly Included	Very Slightly Included	Slightly Included	Included

**COLOR**

D	E	F	G	H	I	J	Faint	Very Light	Light
---	---	---	---	---	---	---	-------	------------	-------



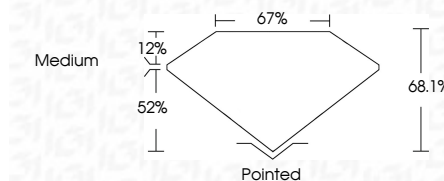
Sample Image Used

December 11, 2023  
IGI Report Number **LG610340819**  
Description **LABORATORY GROWN  
DIAMOND**  
Shape and Cutting Style **SQUARE EMERALD CUT**  
Measurements **6.99 X 6.90 X 4.70 MM**  
**GRADING RESULTS**  
Carat Weight **2.05 CARATS**  
Color Grade **E**  
Clarity Grade **VVS 2**

**ADDITIONAL GRADING INFORMATION**

Polish **EXCELLENT**  
Symmetry **EXCELLENT**  
Fluorescence **NONE**  
Inscription(s) **IGI LG610340819**

Comments: This Laboratory Grown Diamond was created by Chemical Vapor Deposition (CVD) growth process and may include post-growth treatment. Type IIa



**IGI**

December 11, 2023  
IGI Report No LG610340819  
**SQUARE EMERALD CUT**  
6.99 X 6.90 X 4.70 MM  
2.05 CARATS  
E  
VVS 2  
68.1%  
67%  
Medium  
Pointed  
EXCELLENT  
EXCELLENT  
NONE  
IGI LG610340819

Comments: This Laboratory Grown Diamond was created by Chemical Vapor Deposition (CVD) growth process and may include post-growth treatment. Type IIa