



ELECTRONIC COPY

LG610347189

Report verification at igi.org

LABORATORY GROWN DIAMOND REPORT

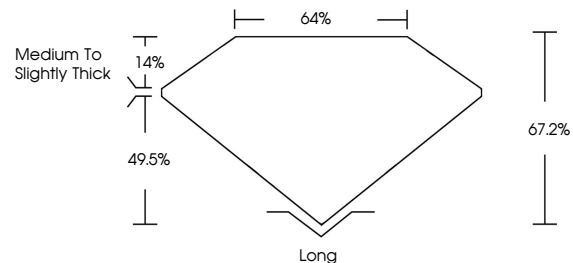
December 11, 2023
 IGI Report Number **LG610347189**
 Description **LABORATORY GROWN
DIAMOND**
 Shape and Cutting Style **EMERALD CUT**
 Measurements **12.50 X 8.13 X 5.46 MM**
GRADING RESULTS
 Carat Weight **5.59 CARATS**
 Color Grade **H**
 Clarity Grade **VS 1**

ADDITIONAL GRADING INFORMATION

Polish **EXCELLENT**
 Symmetry **EXCELLENT**
 Fluorescence **NONE**
 Inscription(s) **IGI LG610347189**

Comments: This Laboratory Grown Diamond was created by Chemical Vapor Deposition (CVD) growth process and may include post-growth treatment. Type IIa

PROPORTIONS



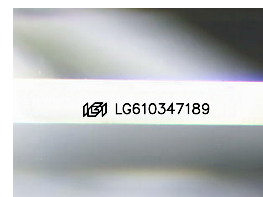
GRADING SCALES

CLARITY

IF	VVS ¹⁻²	VS ¹⁻²	SI ¹⁻²	I ¹⁻³
Internally Flawless	Very Very Slightly Included	Very Slightly Included	Slightly Included	Included

COLOR

D	E	F	G	H	I	J	Faint	Very Light	Light
---	---	---	---	---	---	---	-------	------------	-------



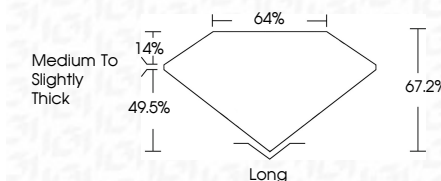
Sample Image Used

December 11, 2023
 IGI Report Number **LG610347189**
 Description **LABORATORY GROWN
DIAMOND**
 Shape and Cutting Style **EMERALD CUT**
 Measurements **12.50 X 8.13 X 5.46 MM**
GRADING RESULTS
 Carat Weight **5.59 CARATS**
 Color Grade **H**
 Clarity Grade **VS 1**

ADDITIONAL GRADING INFORMATION

Polish **EXCELLENT**
 Symmetry **EXCELLENT**
 Fluorescence **NONE**
 Inscription(s) **IGI LG610347189**

Comments: This Laboratory Grown Diamond was created by Chemical Vapor Deposition (CVD) growth process and may include post-growth treatment. Type IIa



IGI

December 11, 2023
 IGI Report No **LG610347189**
EMERALD CUT
 12.50 X 8.13 X 5.46 MM
 Carat Weight **5.59 CARATS**
 Color Grade **H**
 Clarity Grade **VS 1**
 Depth **67.2%**
 Table **64%**
 Girdle **Medium To Slightly Thick**
 Culet **Long**
 Polish **EXCELLENT**
 Symmetry **EXCELLENT**
 Fluorescence **NONE**
 Inscription(s) **IGI LG610347189**
 Comments: This Laboratory Grown Diamond was created by Chemical Vapor Deposition (CVD) growth process and may include post-growth treatment. Type IIa