



**ELECTRONIC COPY**

## LABORATORY GROWN DIAMOND REPORT

December 21, 2023	
IGI Report Number	LG612325687
Description	LABORATORY GROWN DIAMOND
Shape and Cutting Style	EMERALD CUT
Measurements	7.64 X 5.03 X 3.16 MM

## GRADING RESULTS

Carat Weight	1.24 CARAT
Color Grade	G
Clarity Grade	VS 2

### ADDITIONAL GRADING INFORMATION

Polish	EXCELLENT
Symmetry	EXCELLENT
Fluorescence	NONE
Inscription(s)	 LG612325687

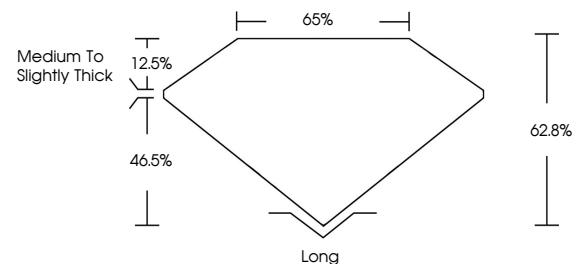
Comments: This Laboratory Grown Diamond was created by Chemical Vapor Deposition (CVD) growth process and may include post-growth treatment.  
Type IIa

## LABORATORY GROWN DIAMOND REPORT

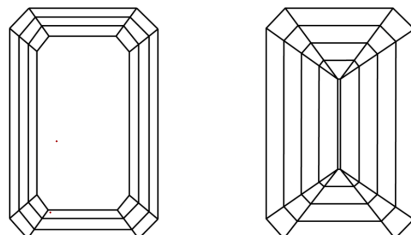
LG612325687

Report verification at [igi.org](http://igi.org)

## PROPORTIONS



## CLARITY CHARACTERISTICS



## KEY TO SYMBOLS

Red symbols indicate internal characteristics.  
Green symbols indicate external characteristics.

LABORATORY GROWN  
DIAMOND REPORT

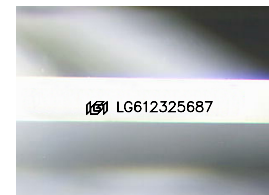
## GRADING SCALES

## CLARITY

IF	VVS <sup>1-2</sup>	VS <sup>1-2</sup>	SI <sup>1-2</sup>	I <sup>1-3</sup>
Internally Flawless	Very Very Slightly Included	Very Slightly Included	Slightly Included	Included

**COLOR**

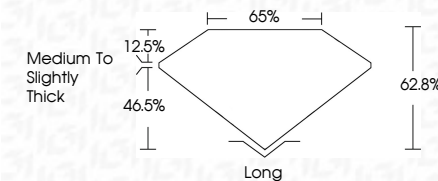
D E F G H I J Faint Very Light Light



Sample Image Used



December 21, 2023	
IGI Report Number	LG612325687
Description	LABORATORY GROWN DIAMOND
Shape and Cutting Style	EMERALD CUT
Measurements	7.64 X 5.03 X 3.16 MM
<b>GRADING RESULTS</b>	
Carat Weight	1.24 CARAT
Color Grade	G
Clarity Grade	VVS 2



### ADDITIONAL GRADING INFORMATION

Polish	EXCELLENT
Symmetry	EXCELLENT
Fluorescence	NONE
Inscription(s)	103 LG-612325687

Comments: This Laboratory Grown Diamond was created by Chemical Vapor Deposition (CVD) growth process and may include post-growth treatment.  
Type IIa



© IGI 2020, International Gemological Institute

FD - 10 20

**www.igi.org**

December 21, 2023  
 GJ Report No LG612325687

<b>GI Report No</b>	G612325687
<b>BEMALD CUT</b>	
<b>Size</b>	7.64 X 5.03 X 3.16 MM
<b>Carat Weight</b>	1.24 CARAT
<b>Color Grade</b>	G
<b>Clarity Grade</b>	VVS 2
<b>Depth</b>	62.9%
<b>Table</b>	65%
<b>Girdle</b>	Medium To Slightly Thick
<b>Culet</b>	Long
<b>Polish</b>	EXCELLENT
<b>Symmetry</b>	EXCELLENT
<b>Fluorescence</b>	NONE

**Comments:**  
This Laboratory Grown Diamond was created by Chemical Vapor Deposition (CVD) growth process and may include post-growth treatment.

THIS DOCUMENT WAS PRODUCED WITH THE FOLLOWING SECURITY MEASURES: SPECIAL DOCUMENT PAPER, INK SCREENS, WATERMARK, BACKGROUND DESIGNS, HOLOGRAM AND OTHER SECURITY FEATURES NOT LISTED AND DO EXCEED DOCUMENT SECURITY INDUSTRY GUIDELINES