



ELECTRONIC COPY

LABORATORY GROWN DIAMOND REPORT

January 13, 2024
 IGI Report Number **LG617476483**
 Description **LABORATORY GROWN
DIAMOND**
 Shape and Cutting Style **SQUARE EMERALD CUT**
 Measurements **11.58 X 11.19 X 7.13 MM**
GRADING RESULTS
 Carat Weight **8.67 CARATS**
 Color Grade **G**
 Clarity Grade **VS 1**

ADDITIONAL GRADING INFORMATION

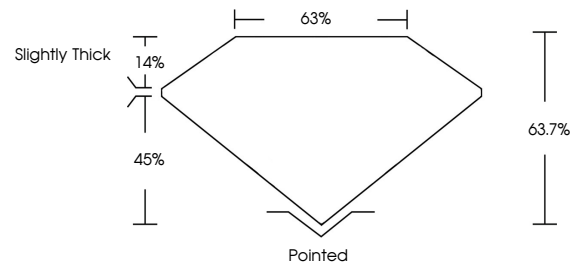
Polish **EXCELLENT**
 Symmetry **EXCELLENT**
 Fluorescence **NONE**
 Inscription(s) **IGI LG617476483**

Comments: This Laboratory Grown Diamond was created by Chemical Vapor Deposition (CVD) growth process and may include post-growth treatment. Type IIa

LABORATORY GROWN DIAMOND REPORT

LG617476483
 Report verification at igi.org

PROPORTIONS



**LABORATORY GROWN
DIAMOND REPORT**

LABORATORY GROWN DIAMOND REPORT

GRADING SCALES

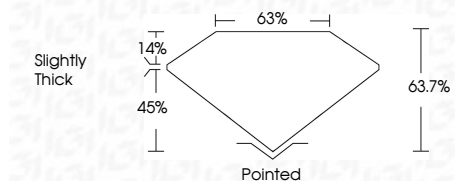
CLARITY

IF	VVS ¹⁻²	VS ¹⁻²	SI ¹⁻²	I ¹⁻³
Internally Flawless	Very Very Slightly Included	Very Slightly Included	Slightly Included	Included

COLOR

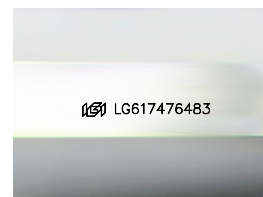
D	E	F	G	H	I	J	Faint	Very Light	Light
---	---	---	---	---	---	---	-------	------------	-------

January 13, 2024
 IGI Report Number **LG617476483**
 Description **LABORATORY GROWN
DIAMOND**
 Shape and Cutting Style **SQUARE EMERALD CUT**
 Measurements **11.58 X 11.19 X 7.13 MM**
GRADING RESULTS
 Carat Weight **8.67 CARATS**
 Color Grade **G**
 Clarity Grade **VS 1**



ADDITIONAL GRADING INFORMATION

Polish **EXCELLENT**
 Symmetry **EXCELLENT**
 Fluorescence **NONE**
 Inscription(s) **IGI LG617476483**
 Comments: This Laboratory Grown Diamond was created by Chemical Vapor Deposition (CVD) growth process and may include post-growth treatment. Type IIa



Sample Image Used



IGI

January 13, 2024
 IGI Report No LG617476483
SQUARE EMERALD CUT
 11.58 X 11.19 X 7.13 MM
 Carat Weight **8.67 CARATS**
 Color Grade **G**
 Clarity Grade **VS 1**
 Table **63.7%**
 Girdle **65%**
 Slightly Thick
 Culet **Pointed**
 Polish **EXCELLENT**
 Symmetry **EXCELLENT**
 Fluorescence **NONE**
 Inscription(s) **IGI LG617476483**

Comments: This Laboratory Grown Diamond was created by Chemical Vapor Deposition (CVD) growth process and may include post-growth treatment. Type IIa