



**ELECTRONIC COPY**

LG621498215

Report verification at [igi.org](http://igi.org)

**LABORATORY GROWN DIAMOND REPORT**

February 15, 2024  
IGI Report Number **LG621498215**

Description **LABORATORY GROWN  
DIAMOND**

Shape and Cutting Style **EMERALD CUT**

Measurements **8.12 X 5.75 X 3.85 MM**

**GRADING RESULTS**

Carat Weight **1.78 CARAT**

Color Grade **F**

Clarity Grade **VS 1**

**ADDITIONAL GRADING INFORMATION**

Polish **EXCELLENT**

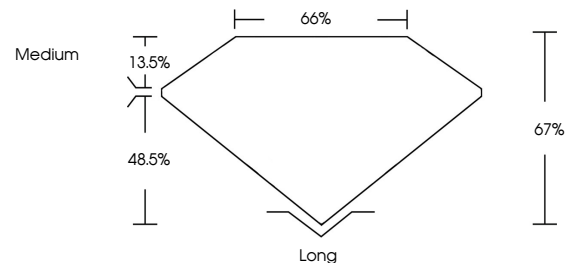
Symmetry **EXCELLENT**

Fluorescence **NONE**

Inscription(s) **IGI LG621498215**

Comments: This Laboratory Grown Diamond was created by Chemical Vapor Deposition (CVD) growth process and may include post-growth treatment. Type IIa

**PROPORTIONS**



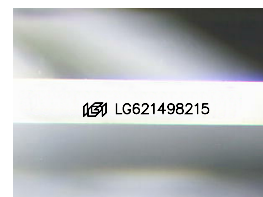
**GRADING SCALES**

**CLARITY**

IF	VVS <sup>1-2</sup>	VS <sup>1-2</sup>	SI <sup>1-2</sup>	I <sup>1-3</sup>
Internally Flawless	Very Very Slightly Included	Very Slightly Included	Slightly Included	Included

**COLOR**

D	E	F	G	H	I	J	Faint	Very Light	Light
---	---	---	---	---	---	---	-------	------------	-------



Sample Image Used

February 15, 2024

IGI Report Number **LG621498215**

Description **LABORATORY GROWN  
DIAMOND**

Shape and Cutting Style **EMERALD CUT**

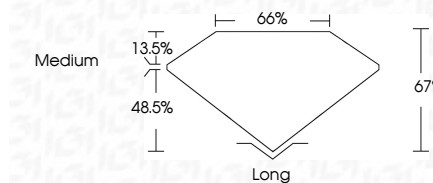
Measurements **8.12 X 5.75 X 3.85 MM**

**GRADING RESULTS**

Carat Weight **1.78 CARAT**

Color Grade **F**

Clarity Grade **VS 1**



**ADDITIONAL GRADING INFORMATION**

Polish **EXCELLENT**

Symmetry **EXCELLENT**

Fluorescence **NONE**

Inscription(s) **IGI LG621498215**

Comments: This Laboratory Grown Diamond was created by Chemical Vapor Deposition (CVD) growth process and may include post-growth treatment. Type IIa



**IGI**



February 15, 2024  
IGI Report No LG621498215  
**EMERALD CUT**

8.12 X 5.75 X 3.85 MM

Carat Weight **1.78 CARAT**

Color Grade **F**

Clarity Grade **VS 1**

Depth **48%**

Table **66%**

Girdle **Medium**

Culet **Long**

Polish **EXCELLENT**

Symmetry **EXCELLENT**

Fluorescence **NONE**

Inscription(s) **IGI LG621498215**

Comments: This Laboratory Grown Diamond was created by Chemical Vapor Deposition (CVD) growth process and may include post-growth treatment. Type IIa