

ELECTRONIC COPY

LABORATORY GROWN DIAMOND REPORT

February 17, 2024	
IGI Report Number	LG622459484
Description	LABORATORY GROWN DIAMOND
Shape and Cutting Style	PEAR BRILLIANT
Measurements	8.98 X 5.63 X 3.54 MM

GRADING RESULTS

Carat Weight	1.02 CARAT
Color Grade	D
Clarity Grade	VVS 1

ADDITIONAL GRADING INFORMATION

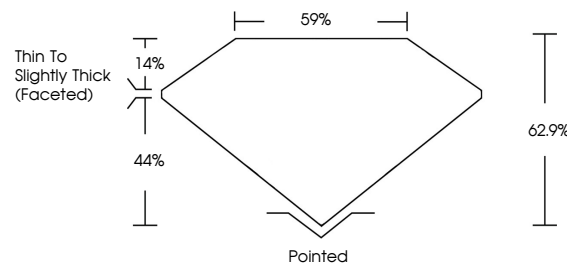
Polish	EXCELLENT
Symmetry	EXCELLENT
Fluorescence	NONE
Inscription(s)	 LG622459484

Comments: As Grown - No indication of post-growth treatment.
This Laboratory Grown Diamond was created by High Pressure High Temperature (HPHT) growth process.
Type II

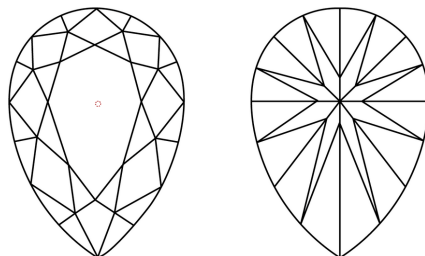
LABORATORY GROWN DIAMOND REPORT

LG622459484
Report verification at igi.org

PROPORTIONS



CLARITY CHARACTERISTICS



KEY TO SYMBOLS

Red symbols indicate internal characteristics.
Green symbols indicate external characteristics.

LABORATORY GROWN
DIAMOND REPORT

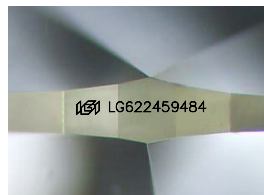
GRADING SCALES

CLARITY

IF	VVS ¹⁻²	VS ¹⁻²	SI ¹⁻²	I ¹⁻³
Internally Flawless	Very Very Slightly Included	Very Slightly Included	Slightly Included	Included

COLOR

D E F G H I J Faint Very Light Light



Sample Image Used



© IGI 2020, International Gemological Institute

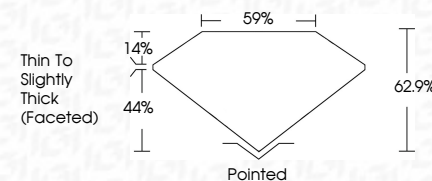
FD - 10 20



THIS DOCUMENT WAS PRODUCED WITH THE FOLLOWING SECURITY MEASURES: SPECIAL DOCUMENT PAPER, INK SCREENS, WATERMARK, BACKGROUND DESIGNS, HOLOGRAM AND OTHER SECURITY FEATURES NOT LISTED AND DO EXCEED DOCUMENT SECURITY INDUSTRY GUIDELINES

LABORATORY GROWN DIAMOND REPORT

February 17, 2024	
IGI Report Number	LG622459484
Description	LABORATORY GROWN DIAMOND
Shape and Cutting Style	PEAR BRILLIANT
Measurements	8.98 X 5.63 X 3.54 MM
GRADING RESULTS	
Carat Weight	1.02 CARAT
Color Grade	D
Clarity Grade	VVS 1



ADDITIONAL GRADING INFORMATION

Polish	EXCELLENT
Symmetry	EXCELLENT
Fluorescence	NONE
Inscription(s)	(G) LG622459484
Comments: As Grown - No indication of post-growth treatment.	
This Laboratory Grown Diamond was created by High Pressure High Temperature (HPHT) growth process.	
Type II	



IG

February 17, 2024	1.02 CARAT
IG Report No LG502469484	
PEAR BRILLIANT	
5.9 X 5.63 X 3.54 MM	
Carat Weight	VVS 1
Color Grade	G2
Clarity Grade	62.9%
Depth	69%
Table	Thin to Slightly Thick
Girdle	(Faceted)
Culet	Polished
Polish	EXCELLENT
Symmetry	EXCELLENT
Fluorescence	NONE
Inscriptions	Serial LG502469484

Comments:
As Grown - No Indication of post-growth treatment.
This Laboratory Grown Diamond was created by High Pressure High temperature (HPHT) growth process.