



ELECTRONIC COPY

LABORATORY GROWN DIAMOND REPORT

March 20, 2024	
IGI Report Number	LG626415982
Description	LABORATORY GROWN DIAMOND
Shape and Cutting Style	ROUND BRILLIANT
Measurements	10.82 - 10.89 X 6.52 MM

GRADING RESULTS

Carat Weight	4.70 CARATS
Color Grade	E
Clarity Grade	VS 2
Cut Grade	IDEAL

ADDITIONAL GRADING INFORMATION

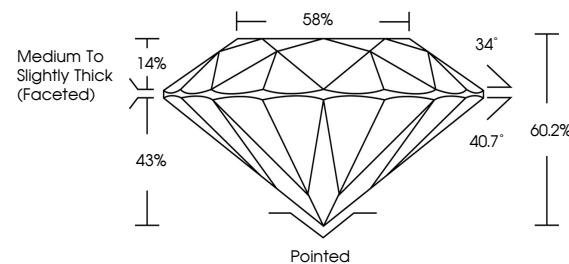
Polish	EXCELLENT
Symmetry	EXCELLENT
Fluorescence	NONE
Inscription(s)	 LG626415982

Comments: This Laboratory Grown Diamond was created by Chemical Vapor Deposition (CVD) growth process and may include post-growth treatment.
Type IIa

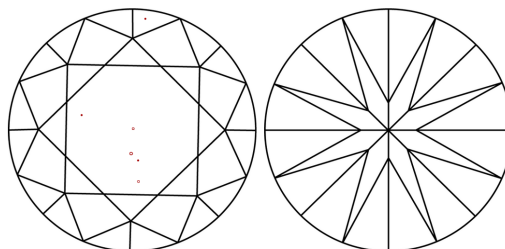
LABORATORY GROWN DIAMOND REPORT

LG626415982
Report verification at igi.org

PROPORTIONS



CLARITY CHARACTERISTICS



KEY TO SYMBOLS

Red symbols indicate internal characteristics.
Green symbols indicate external characteristics.

LABORATORY GROWN
DIAMOND REPORT

GRADING SCALES

CLARITY

IF	VVS ¹⁻²	VS ¹⁻²	SI ¹⁻²	I ¹⁻³
Internally Flawless	Very Very Slightly Included	Very Slightly Included	Slightly Included	Included

COLOR

D E F G H I J Faint Very Light Light



Sample Image Used

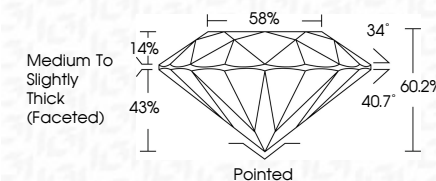


© IGI 2020, International Gemological Institute

FD - 10 20

LABORATORY GROWN DIAMOND REPORT

March 20, 2024	
IGI Report Number	LG626415982
Description	LABORATORY GROWN DIAMOND
Shape and Cutting Style	ROUND BRILLIANT
Measurements	10.82 - 10.89 X 6.52 MM
GRADING RESULTS	
Carat Weight	4.70 CARATS
Color Grade	E
Clarity Grade	VS 2
Cut Grade	IDEAL



ADDITIONAL GRADING INFORMATION

Polish	EXCELLENT
Symmetry	EXCELLENT
Fluorescence	NONE
Inscription(s)	1631 LG626415982
<p>Comments: This Laboratory Grown Diamond was created by Chemical Vapor Deposition (CVD) growth process and may include post-growth treatment.</p> <p>Type IIa</p>	



March 20, 2024	GI Report No. G1269411982	
ROUND BRILLIANT		
10.02 - 10.99 X 6.52 MM		
Carat Weight	4.70 CARATS	E
Color Grade		VS 2
Clarity Grade		IDEAL
Cut Grade		60.2%
Depth		58%
Table		Medium To Slightly Thick (Faceted)
Girdle		Poished
Culet		EXCELLENT
Polish		EXCELLENT
Symmetry		NONE
Fluorescence		IGL/GS4611982
Inscriptions(s)		
Comments:		
	The Laboratory Graded Diamond was created by Chemical Vapor Deposition (CVD) process and may include post-growth treatment.	
	Type Ila	