

ELECTRONIC COPY

LABORATORY GROWN DIAMOND REPORT

March 21, 2024	
IGI Report Number	LG626459962
Description	LABORATORY GROWN DIAMOND
Shape and Cutting Style	ROUND BRILLIANT
Measurements	7.93 - 7.98 X 4.95 MM

GRADING RESULTS

Carat Weight	1.93 CARAT
Color Grade	E
Clarity Grade	VVS 2
Cut Grade	IDEAL

ADDITIONAL GRADING INFORMATION

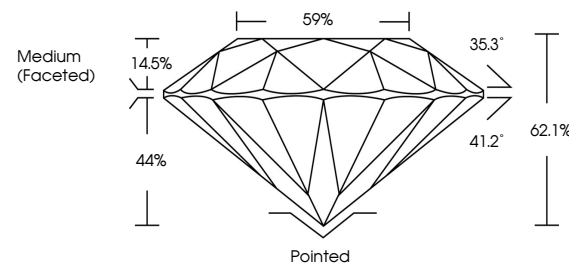
Polish	EXCELLENT
Symmetry	EXCELLENT
Fluorescence	NONE
Inscription(s)	13 LG626459962

Comments: This Laboratory Grown Diamond was created by Chemical Vapor Deposition (CVD) growth process and may include post-growth treatment.
Type IIa

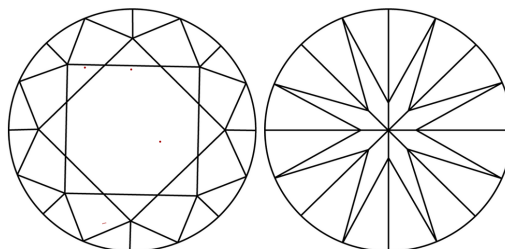
LABORATORY GROWN DIAMOND REPORT

LG626459962
Report verification at igi.org

PROPORTIONS



CLARITY CHARACTERISTICS



KEY TO SYMBOLS

Red symbols indicate internal characteristics.
Green symbols indicate external characteristics.

LABORATORY GROWN
DIAMOND REPORT

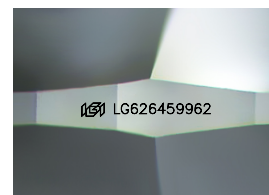
GRADING SCALES

CLARITY

IF	VVS ¹⁻²	VS ¹⁻²	SI ¹⁻²	I ¹⁻³
Internally Flawless	Very Very Slightly Included	Very Slightly Included	Slightly Included	Included

COLOR

D E F G H I J Faint Very Light Light



Sample Image Used



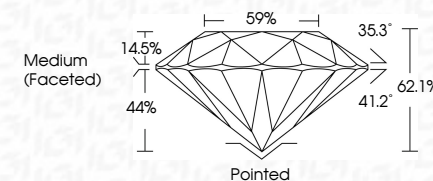
© IGI 2020, International Gemological Institute

FD - 10 20


LABORATORY GROWN DIAMOND REPORT

March 21, 2024	
IGI Report Number	LG626459962
Description	LABORATORY GROWN DIAMOND
Shape and Cutting Style	ROUND BRILLIANT
Measurements	7.93 - 7.98 X 4.95 MM

GRADING RESULTS	
Carat Weight	1.93 CARAT
Color Grade	E
Clarity Grade	VVS 2
Cut Grade	IDEAL



ADDITIONAL GRADING INFORMATION

Polish	EXCELLENT
Symmetry	EXCELLENT
Fluorescence	NONE
Inscription(s)	 LG626459962
<p>Comments: This Laboratory Grown Diamond was created by Chemical Vapor Deposition (CVD) growth process and may include post-growth treatment.</p> <p>Type IIa</p>	



March 21, 2024	GI Report No. LG62456992	
ROUND BRILLIANT		
7.98 - 7.98 X 4.95 MM		
Carat Weight	1.98 CARAT	
Color Grade	E	
Clarity Grade	VVS 2	
Cut Grade	IDEAL	
Depth	62.1%	
Table	59%	
Girdle	Medium (Faceted)	
Culet	Pointed	
Polish	EXCELLENT	
Symmetry	EXCELLENT	
Fluorescence	NONE	
Inscriptions(s)	1691 LG62456992	
Comments:	<p>This is a Natural, Fancy, Round, Diamond was treated by Chemical Vapor Deposition (CVD) growth process and may include post-growth treatment.</p>	
Type IIA		