



ELECTRONIC COPY

LABORATORY GROWN DIAMOND REPORT

April 2, 2024	
IGI Report Number	LG626480027
Description	LABORATORY GROWN DIAMOND
Shape and Cutting Style	EMERALD CUT
Measurements	9.75 X 6.67 X 4.57 MM

GRADING RESULTS

Carat Weight	2.90 CARATS
Color Grade	F
Clarity Grade	VS 2

ADDITIONAL GRADING INFORMATION

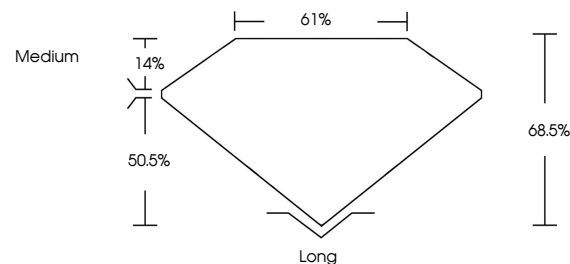
Polish	EXCELLENT
Symmetry	EXCELLENT
Fluorescence	NONE
Inscription(s)	LG626480027

Comments: This Laboratory Grown Diamond was created by Chemical Vapor Deposition (CVD) growth process and may include post-growth treatment.
Type IIa

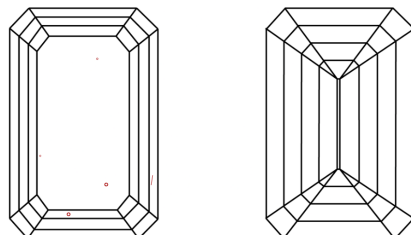
LABORATORY GROWN DIAMOND REPORT

LG626480027
Report verification at igi.org

PROPORTIONS



CLARITY CHARACTERISTICS



KEY TO SYMBOLS

Red symbols indicate internal characteristics.
Green symbols indicate external characteristics.

LABORATORY GROWN
DIAMOND REPORT

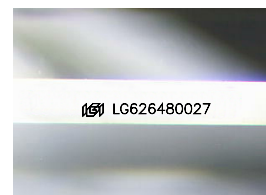
GRADING SCALES

CLARITY

IF	VVS ¹⁻²	VS ¹⁻²	SI ¹⁻²	I ¹⁻³
Internally Flawless	Very Very Slightly Included	Very Slightly Included	Slightly Included	Included

COLOR

D E F G H I J Faint Very Light Light



Sample Image Used

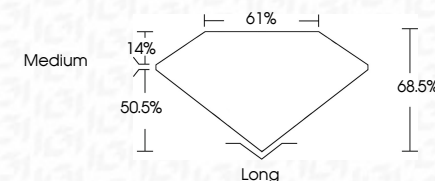


© IGI 2020, International Gemological Institute

FD - 10 20

LABORATORY GROWN DIAMOND REPORT

April 2, 2024	
IGI Report Number	LG626480027
Description	LABORATORY GROWN DIAMOND
Shape and Cutting Style	EMERALD CUT
Measurements	9.75 X 6.67 X 4.57 MM
GRADING RESULTS	
Carat Weight	2.90 CARATS
Color Grade	F
Clarity Grade	VS 2



ADDITIONAL GRADING INFORMATION

Polish	EXCELLENT
Symmetry	EXCELLENT
Fluorescence	NONE
Inscription(s)	(15) LG626480027

Comments: This Laboratory Grown Diamond was created by Chemical Vapor Deposition (CVD) growth process and may include post-growth treatment.
Type IIa



April 2, 2024	GI Report No LG60480027	2.90 CARATS	VS 2	Long
EMERALD CUT	Color Grade	F	68.5%	EXCELLENT
	Carat Weight		61%	EXCELLENT
	Clarity Grade		Medium	NONE
	Depth			EXCELLENT
	Table			EXCELLENT
	Grade			EXCELLENT
	Fluorescence			EXCELLENT
	Polish			EXCELLENT
	Symmetry			EXCELLENT
	Fluorescence			EXCELLENT
	Fluorescence			EXCELLENT

Comments:
This Laboratory Grown Diamond was created by Chemical Vapor Deposition (CVD) growth process and may include post-growth treatment.