



ELECTRONIC COPY

LABORATORY GROWN DIAMOND REPORT

April 6, 2024	
IGI Report Number	LG628481142
Description	LABORATORY GROWN DIAMOND
Shape and Cutting Style	ROUND BRILLIANT
Measurements	9.95 - 9.98 X 6.02 MM

GRADING RESULTS

Carat Weight	3.65 CARATS
Color Grade	F
Clarity Grade	VS 1
Cut Grade	IDEAL

ADDITIONAL GRADING INFORMATION

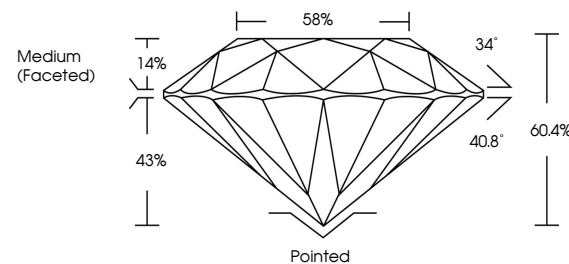
Polish	EXCELLENT
Symmetry	EXCELLENT
Fluorescence	NONE
Inscription(s)	 LG628481142

Comments: This Laboratory Grown Diamond was created by Chemical Vapor Deposition (CVD) growth process and may include post-growth treatment.
Type IIa

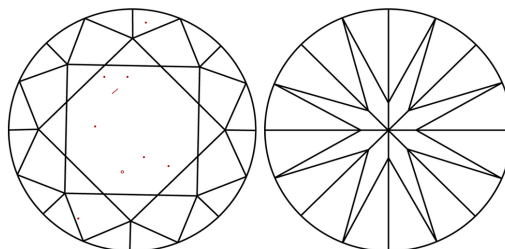
LABORATORY GROWN DIAMOND REPORT

LG628481142
Report verification at igi.org

PROPORTIONS



CLARITY CHARACTERISTICS



KEY TO SYMBOLS

Red symbols indicate internal characteristics.
Green symbols indicate external characteristics.

LABORATORY GROWN
DIAMOND REPORT

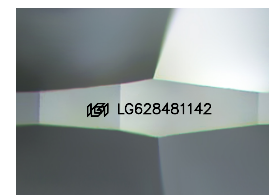
GRADING SCALES

CLARITY

IF	VVS ¹⁻²	VS ¹⁻²	SI ¹⁻²	I ¹⁻³
Internally Flawless	Very Very Slightly Included	Very Slightly Included	Slightly Included	Included

COLOR

D E F G H I J Faint Very Light Light



Sample Image Used

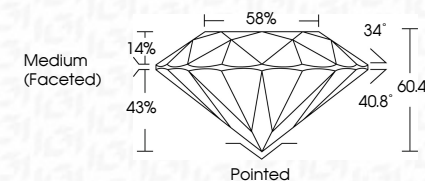


© IGI 2020, International Gemological Institute

FD - 10 20



April 6, 2024	
IGI Report Number	LG628481142
Description	LABORATORY GROWN DIAMOND
Shape and Cutting Style	ROUND BRILLIANT
Measurements	9.95 - 9.98 X 6.02 MM
GRADING RESULTS	
Carat Weight	3.65 CARATS
Color Grade	F
Clarity Grade	VS 1
Cut Grade	IDEAL



ADDITIONAL GRADING INFORMATION

Polish	EXCELLENT
Symmetry	EXCELLENT
Fluorescence	NONE
Inscription(s)	LG628481142 LG628481142
<p>Comments: This Laboratory Grown Diamond was created by Chemical Vapor Deposition (CVD) growth process and may include post-growth treatment.</p> <p>Type IIa</p>	

April 6, 2024	Report No. LG20481142	ROUND BRILLIANT	3.66 CARATS	F	VS 1	IDEAL	60.0%	58%	Medium (Faceted)	Painted	EXCELLENT	EXCELLENT	NONE	lgg.LG20481142
				Carat Weight	Clarity Grade	Cut Grade	Depth	Table		Color	Symmetry	Fluorescence	Inscriptions(s)	
		9.05 - 9.08 X 6.02 MM		Color Grade										

Comments: The Laboratory Grown Diamond was created by Chemical Vapor Deposition (CVD) process and may include post-growth treatment.

type Ila