



ELECTRONIC COPY

LABORATORY GROWN DIAMOND REPORT

April 10, 2024	
IGI Report Number	LG629483461
Description	LABORATORY GROWN DIAMOND
Shape and Cutting Style	ROUND BRILLIANT
Measurements	9.93 - 9.97 X 6.08 MM

GRADING RESULTS

Carat Weight	3.73 CARATS
Color Grade	F
Clarity Grade	VS 1
Cut Grade	IDEAL

ADDITIONAL GRADING INFORMATION

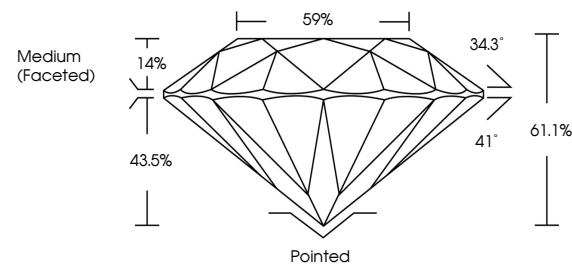
Polish	EXCELLENT
Symmetry	EXCELLENT
Fluorescence	NONE
Inscription(s)	 LG629483461

Comments: This Laboratory Grown Diamond was created by Chemical Vapor Deposition (CVD) growth process and may include post-growth treatment.
Type IIa

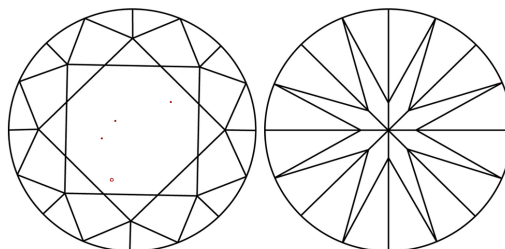
LABORATORY GROWN DIAMOND REPORT

LG629483461
Report verification at iqi.org

PROPORTIONS



CLARITY CHARACTERISTICS



KEY TO SYMBOLS

Red symbols indicate internal characteristics.
Green symbols indicate external characteristics.

LABORATORY GROWN
DIAMOND REPORT

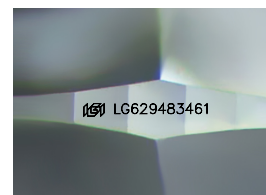
GRADING SCALES

CLARITY

IF	VVS ¹⁻²	VS ¹⁻²	SI ¹⁻²	I ¹⁻³
Internally Flawless	Very Very Slightly Included	Very Slightly Included	Slightly Included	Included

COLOR

D E F G H I J Faint Very Light Light



Sample Image Used



© IGI 2020, International Gemological Institute

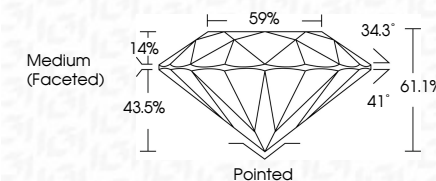
FD - 10 20

www.igi.org

LABORATORY GROWN DIAMOND REPORT

April 10, 2024	
IGI Report Number	LG629483461
Description	LABORATORY GROWN DIAMOND
Shape and Cutting Style	ROUND BRILLIANT
Measurements	9.93 - 9.97 X 6.08 MM

GRADING RESULTS	
Carat Weight	3.73 CARATS
Color Grade	F
Clarity Grade	VS 1
Cut Grade	IDEAL



ADDITIONAL GRADING INFORMATION

Polish	EXCELLENT
Symmetry	EXCELLENT
Fluorescence	NONE
Inscription(s)	151 LG-629483461

Comments: This Laboratory Grown Diamond was created by Chemical Vapor Deposition (CVD) growth process and may include post-growth treatment.
Type IIa



April 10, 2024	3.73 CARATS	
G Report No. LG24083461	F	
ROUND BRILLIANT	VS 1	
	IDEAL	
	61.1%	
	59%	
	Medium (Faceted)	
	Pointed	
	EXCELLENT	
	EXCELLENT	
	NONE	
	169 LG24083461	

Comments:

The Laboratory Crown Diamond was
 a Grown Diamond that was
 GVD growth process and may include
 post-growth treatment.
 type Ila