



**ELECTRONIC COPY**

## LABORATORY GROWN DIAMOND REPORT

|                         |                             |
|-------------------------|-----------------------------|
| April 18, 2024          |                             |
| IGI Report Number       | LG630445444                 |
| Description             | LABORATORY GROWN<br>DIAMOND |
| Shape and Cutting Style | ROUND BRILLIANT             |
| Measurements            | 10.02 - 10.07 X 6.20 MM     |

## GRADING RESULTS

|               |             |
|---------------|-------------|
| Carat Weight  | 3.86 CARATS |
| Color Grade   | F           |
| Clarity Grade | VS 1        |
| Cut Grade     | IDEAL       |

### ADDITIONAL GRADING INFORMATION

|                |                |
|----------------|----------------|
| Polish         | EXCELLENT      |
| Symmetry       | EXCELLENT      |
| Fluorescence   | NONE           |
| Inscription(s) | 13 LG630445444 |

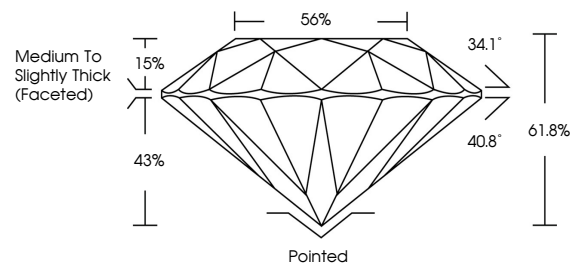
Comments: This Laboratory Grown Diamond was created by Chemical Vapor Deposition (CVD) growth process and may include post-growth treatment.  
Type IIa

## LABORATORY GROWN DIAMOND REPORT

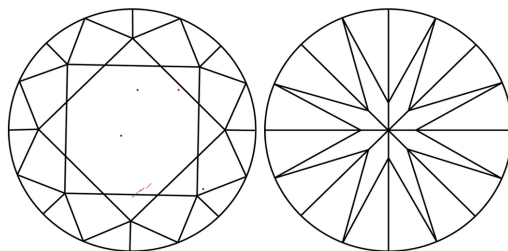
LG630445444

Report verification at [igi.org](http://igi.org)

## PROPORTIONS



## CLARITY CHARACTERISTICS



## KEY TO SYMBOLS

Red symbols indicate internal characteristics.  
Green symbols indicate external characteristics.

LABORATORY GROWN  
DIAMOND REPORT

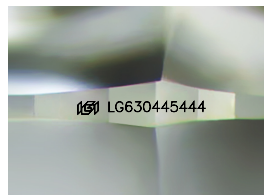
## GRADING SCALES

## CLARITY

| IF                  | VVS <sup>1-2</sup>          | VS <sup>1-2</sup>      | SI <sup>1-2</sup> | I <sup>1-3</sup> |
|---------------------|-----------------------------|------------------------|-------------------|------------------|
| Internally Flawless | Very Very Slightly Included | Very Slightly Included | Slightly Included | Included         |

**COLOR**

D E F G H I J Faint Very Light Light



Sample Image Used



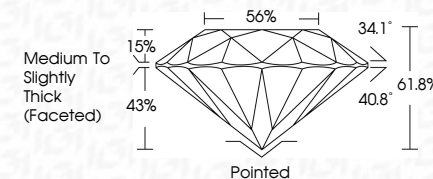
© IGI 2020, International Gemological Institute

FD - 10 20

## LABORATORY GROWN DIAMOND REPORT

|                         |                             |
|-------------------------|-----------------------------|
| April 18, 2024          |                             |
| IGI Report Number       | LG630445444                 |
| Description             | LABORATORY GROWN<br>DIAMOND |
| Shape and Cutting Style | ROUND BRILLIANT             |
| Measurements            | 10.02 - 10.07 X 6.20 MM     |

| GRADING RESULTS |             |
|-----------------|-------------|
| Carat Weight    | 3.86 CARATS |
| Color Grade     | F           |
| Clarity Grade   | VS 1        |
| Cut Grade       | IDEAL       |



### ADDITIONAL GRADING INFORMATION

|                |                |
|----------------|----------------|
| Polish         | EXCELLENT      |
| Symmetry       | EXCELLENT      |
| Fluorescence   | NONE           |
| Inscription(s) | 18 LG 63044544 |

Comments: This Laboratory Grown Diamond was created by Chemical Vapor Deposition (CVD) growth process and may include post-growth treatment.  
Type IIa



|           |   |
|-----------|---|
|           | April 18, 2024  |
|           | GRI NO LG93046544   |
|           | SOUND BRILLIANT   |
|           | 10.02 - 10.07 X 6.20 MM   |
|           | Carat Weight  |
|           | Color Grade   |
|           | Clarity Grade   |
|           | Cut Grade   |
|           | Depth   |
|           | Table   |
|           | Girdle  |
|           | Medium to Slightly Thick (faceted)  |
|           | Vs 1<br>IDEAL<br>61.6%<br>56%   |
|           | Parked<br>EXCELLENT<br>EXCELLENT<br>NONE  |
|           | (#) LGS3046544  |
| Comments: | Created by Crown Diamond usa<br>Graded by Chemical Vapor Deposition<br>(CVD) growth process and may include<br>post-growth treatment. |
|           | Type IIA  |