



ELECTRONIC COPY

LG631440679

Report verification at igi.org

LABORATORY GROWN DIAMOND REPORT

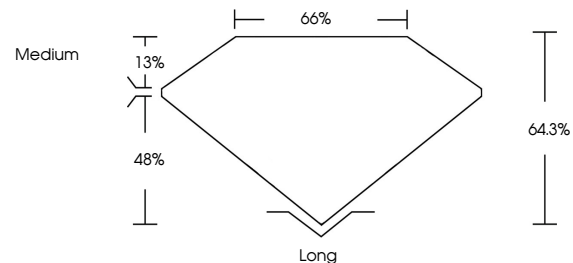
April 22, 2024
 IGI Report Number **LG631440679**
 Description **LABORATORY GROWN
DIAMOND**
 Shape and Cutting Style **EMERALD CUT**
 Measurements **8.01 X 5.58 X 3.59 MM**
GRADING RESULTS
 Carat Weight **1.60 CARAT**
 Color Grade **F**
 Clarity Grade **INTERNALLY FLAWLESS**

ADDITIONAL GRADING INFORMATION

Polish **EXCELLENT**
 Symmetry **EXCELLENT**
 Fluorescence **NONE**
 Inscription(s) **IGI LG631440679**

Comments: This Laboratory Grown Diamond was created by Chemical Vapor Deposition (CVD) growth process and may include post-growth treatment. Type IIa

PROPORTIONS



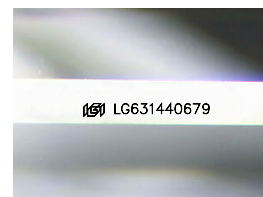
GRADING SCALES

CLARITY

IF	VVS ¹⁻²	VS ¹⁻²	SI ¹⁻²	I ¹⁻³
Internally Flawless	Very Very Slightly Included	Very Slightly Included	Slightly Included	Included

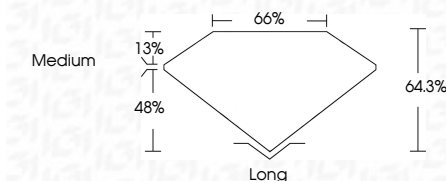
COLOR

D	E	F	G	H	I	J	Faint	Very Light	Light
---	---	---	---	---	---	---	-------	------------	-------



Sample Image Used

April 22, 2024
 IGI Report Number **LG631440679**
 Description **LABORATORY GROWN
DIAMOND**
 Shape and Cutting Style **EMERALD CUT**
 Measurements **8.01 X 5.58 X 3.59 MM**
GRADING RESULTS
 Carat Weight **1.60 CARAT**
 Color Grade **F**
 Clarity Grade **INTERNALLY FLAWLESS**



ADDITIONAL GRADING INFORMATION

Polish **EXCELLENT**
 Symmetry **EXCELLENT**
 Fluorescence **NONE**
 Inscription(s) **IGI LG631440679**

Comments: This Laboratory Grown Diamond was created by Chemical Vapor Deposition (CVD) growth process and may include post-growth treatment. Type IIa



IGI



April 22, 2024
 IGI Report No **LG631440679**
EMERALD CUT
 8.01 X 5.58 X 3.59 MM
 Carat Weight **1.60 CARAT**
 Color Grade **F**
 Clarity Grade **IF**
 Depth **48%**
 Table **13%**
 Girdle **Medium**
 Culet **Long**
 Polish **EXCELLENT**
 Symmetry **EXCELLENT**
 Fluorescence **NONE**
 Inscription(s) **IGI LG631440679**

Comments: This Laboratory Grown Diamond was created by Chemical Vapor Deposition (CVD) growth process and may include post-growth treatment. Type IIa