



ELECTRONIC COPY

LABORATORY GROWN DIAMOND REPORT

April 29, 2024	
IGI Report Number	LG632445222
Description	LABORATORY GROWN DIAMOND
Shape and Cutting Style	ROUND BRILLIANT
Measurements	7.57 - 7.63 X 4.57 MM

GRADING RESULTS

Carat Weight	1.64 CARAT
Color Grade	E
Clarity Grade	VS 1
Cut Grade	IDEAL

ADDITIONAL GRADING INFORMATION

Polish	EXCELLENT
Symmetry	EXCELLENT
Fluorescence	NONE
Inscription(s)	15 LG632445222

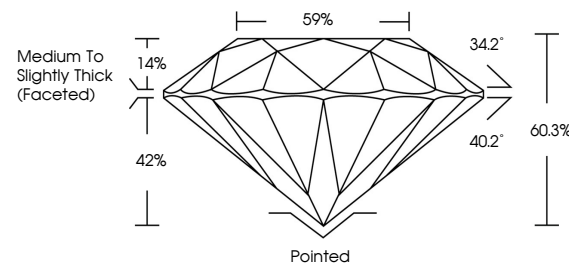
Comments: This Laboratory Grown Diamond was created by Chemical Vapor Deposition (CVD) growth process and may include post-growth treatment.
Type IIa

LABORATORY GROWN DIAMOND REPORT

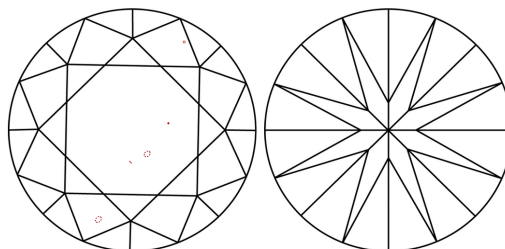
LG632445222

Report verification at igi.org

PROPORTIONS



CLARITY CHARACTERISTICS



KEY TO SYMBOLS

Red symbols indicate internal characteristics.
Green symbols indicate external characteristics.

LABORATORY GROWN
DIAMOND REPORT

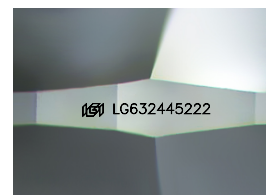
GRADING SCALES

CLARITY

IF	VVS ¹⁻²	VS ¹⁻²	SI ¹⁻²	I ¹⁻³
Internally Flawless	Very Very Slightly Included	Very Slightly Included	Slightly Included	Included

COLOR

D E F G H I J Faint Very Light Light



Sample Image Used



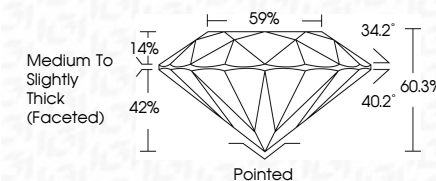
© IGI 2020, International Gemological Institute

FD - 10 20

LABORATORY GROWN DIAMOND REPORT

April 29, 2024	
IGI Report Number	LG632445222
Description	LABORATORY GROWN DIAMOND
Shape and Cutting Style	ROUND BRILLIANT
Measurements	7.57 - 7.63 X 4.57 MM

GRADING RESULTS	
Carat Weight	1.64 CARAT
Color Grade	E
Clarity Grade	VS 1
Cut Grade	IDEAL



ADDITIONAL GRADING INFORMATION

Polish	EXCELLENT
Symmetry	EXCELLENT
Fluorescence	NONE
Inscription(s)	(16) LG632445222

Comments: This Laboratory Grown Diamond was created by Chemical Vapor Deposition (CVD) growth process and may include post-growth treatment.
Type IIa



April 29, 2024	1.64 CARAT
GJ Report No LG83946222	E VS 1 IDEAL 60.9% 59%
ROUND BRILLIANT	Medium to Slightly Thick (faceted)
1.57 - 1.57 - 7.63 x 4.57 MM	Pointed
Coral Weight	EXCELLENT
Color Grade	EXCELLENT
Clarity Grade	NONE
Cut Grade	1691 LG83946222
Depth	
Table	
Girdle	
Cuef	
Polish	
Symmetry	
Fluorescence	
Inscriptions(s)	

Comments:
 Created by GemVapor Diamond was treated by Chemical Vapor Deposition (CVD) growth process and may include post-growth treatment.
 Type Ila