



ELECTRONIC COPY

LABORATORY GROWN DIAMOND REPORT

May 6, 2024  
IGI Report Number LG633412325  
Description LABORATORY GROWN DIAMOND  
Shape and Cutting Style CUT CORNERED RECTANGULAR MODIFIED BRILLIANT  
Measurements 7.07 X 4.75 X 3.39 MM

GRADING RESULTS

Carat Weight 1.01 CARAT  
Color Grade F  
Clarity Grade VVS 2

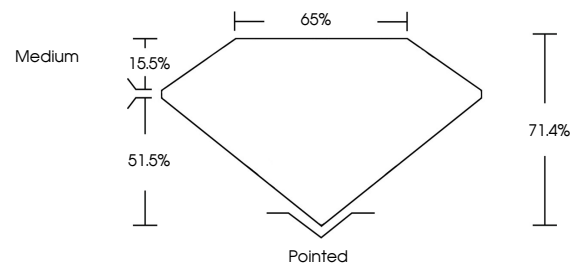
ADDITIONAL GRADING INFORMATION

Polish EXCELLENT  
Symmetry EXCELLENT  
Fluorescence NONE

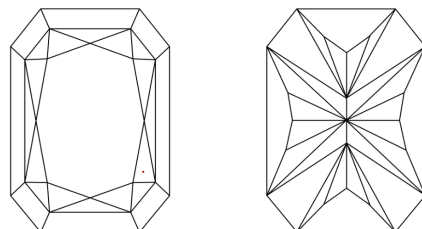
Inscription(s) LG633412325

Comments: This Laboratory Grown Diamond was created by Chemical Vapor Deposition (CVD) growth process and may include post-growth treatment. Type IIa

PROPORTIONS

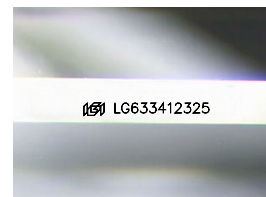


CLARITY CHARACTERISTICS



KEY TO SYMBOLS

Red symbols indicate internal characteristics.  
Green symbols indicate external characteristics.



Sample Image Used

COLOR

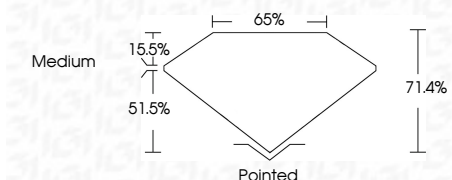
D E F G H I J Faint Very Light Light

CLARITY

IF VS 1-2 VS 1-2 SI 1-2 I 1-3  
Internally Flawless Very Very Slightly Included Very Slightly Included Slightly Included Included



May 6, 2024  
IGI Report Number LG633412325  
Description LABORATORY GROWN DIAMOND  
Shape and Cutting Style CUT CORNERED RECTANGULAR MODIFIED BRILLIANT  
Measurements 7.07 X 4.75 X 3.39 MM  
GRADING RESULTS  
Carat Weight 1.01 CARAT  
Color Grade F  
Clarity Grade VVS 2



ADDITIONAL GRADING INFORMATION

Polish EXCELLENT  
Symmetry EXCELLENT  
Fluorescence NONE  
Inscription(s) LG633412325

Comments: This Laboratory Grown Diamond was created by Chemical Vapor Deposition (CVD) growth process and may include post-growth treatment. Type IIa



IGI

May 6, 2024  
IGI Report No LG633412325  
CUT CORNERED RECT. MODIFIED BRILLIANT  
7.07 X 4.75 X 3.39 MM  
Carat Weight 1.01 CARAT  
Color Grade F  
Clarity Grade VVS 2  
Depth 51.4%  
Table 15.5%  
Girdle 65%  
Medium  
Culet Pointed  
Polish EXCELLENT  
Symmetry EXCELLENT  
Fluorescence NONE  
Inscription(s) LG633412325

Comments: This Laboratory Grown Diamond was created by Chemical Vapor Deposition (CVD) growth process and may include post-growth treatment. Type IIa