



**ELECTRONIC COPY**

## LABORATORY GROWN DIAMOND REPORT

May 9, 2024	
IGI Report Number	LG633483592
Description	LABORATORY GROWN DIAMOND
Shape and Cutting Style	ROUND BRILLIANT
Measurements	9.67 - 9.73 X 5.88 MM

## GRADING RESULTS

Carat Weight	3.41 CARATS
Color Grade	F
Clarity Grade	VS 1
Cut Grade	IDEAL

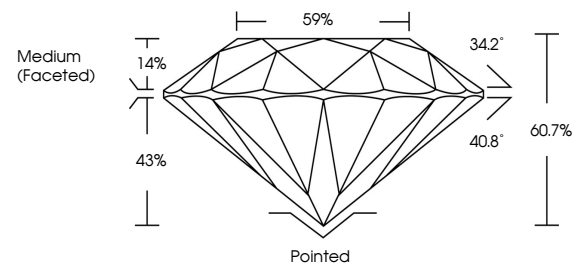
### ADDITIONAL GRADING INFORMATION

Polish	EXCELLENT
Symmetry	EXCELLENT
Fluorescence	NONE
Inscription(s)	 LG633483592

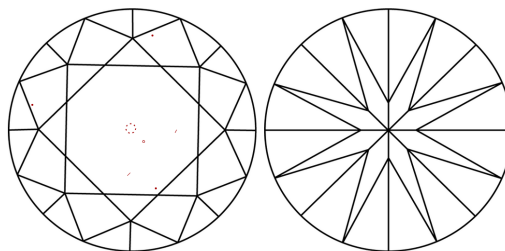
Comments: This Laboratory Grown Diamond was created by Chemical Vapor Deposition (CVD) growth process and may include post-growth treatment.  
Type IIa

LG633483592  
Report verification at [igi.org](https://igi.org)

## PROPORTIONS

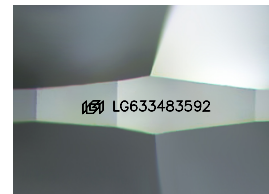


## CLARITY CHARACTERISTICS



## KEY TO SYMBOLS

Red symbols indicate internal characteristics.  
Green symbols indicate external characteristics.



Sample Image Used

**COLOR**

D E F G H I J Faint Very Light Light

## CLARITY

IF	VVS <sup>1-2</sup>	VS <sup>1-2</sup>	SI <sup>1-2</sup>	I <sup>1-3</sup>
Internally Flawless	Very Very Slightly Included	Very Slightly Included	Slightly Included	Included



© IGI 2020, International Gemological Institute

FD - 10 20

**www.igi.org**

DIAMOND REPORT



May 9, 2024

IGI Report Number **LG633483592**

Description	LABORATORY GROWN DIAMOND
-------------	--------------------------

Shape and Cutting Style **ROUND BRILLIANT**

Measurements **9.67 - 9.73 X 5.88 MM**

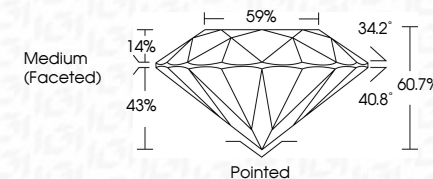
## GRADING RESULTS

Carat Weight **3.41 CARATS**

Color Grade	F
-------------	---

Clarity Grade VS 1

Cut Grade **IDEAL**



### ADDITIONAL GRADING INFORMATION

Polish **EXCELLENCE**Symmetry **EXCELLENCE**Fluorescence NONIInscription(s)  LG633483592

Comments: This Laboratory Grown Diamond was created by Chemical Vapor Deposition (CVD) growth process and may include post-growth treatment.  
Type IIa



IG

<b>May 9, 2024</b>	<b>GJ Report No LGS33483592</b>
<b>ROUND BRILLIANT</b>	<b>3.41 CARATS</b>
<b>6.67 - 6.75 X 5.88 MM</b>	<b>F VS 1</b>
<b>Carat Weight</b>	<b>IDEAL</b>
<b>Color Grade</b>	<b>60.7%</b>
<b>Cut Grade</b>	<b>59%</b>
<b>Clarity Grade</b>	<b>Medium (Faced)</b>
<b>Depth</b>	<b>Polished</b>
<b>Table</b>	<b>EXCELLENT</b>
<b>Girdle</b>	<b>EXCELLENT</b>
	<b>NONE</b>
	<b>#61 LGS33483592</b>
<b>Comments:</b>	
	<b>Unreated, Heavy Crown Diamond was treated by Chemical Vapor Deposition (CVD) growth process and may include post-growth treatment.</b>
	<b>Type IIA</b>