



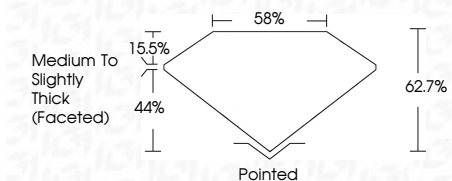
ELECTRONIC COPY

LG634419905 Report verification at igi.org



May 18, 2024 IGI Report Number LG634419905 Description LABORATORY GROWN DIAMOND Shape and Cutting Style OVAL BRILLIANT Measurements 9.64 X 6.44 X 4.04 MM

GRADING RESULTS Carat Weight 1.56 CARAT Color Grade D Clarity Grade VS 1



ADDITIONAL GRADING INFORMATION Polish EXCELLENT Symmetry EXCELLENT Fluorescence NONE Inscription(s) LG634419905 Comments: This Laboratory Grown Diamond was created by Chemical Vapor Deposition (CVD) growth process and may include post-growth treatment. Type IIa



May 18, 2024 IGI Report No LG634419905 OVAL BRILLIANT 1.56 CARAT D VS 1 62.7% 85% Medium to Slightly Thick (Faceted) Pointed EXCELLENT EXCELLENT NONE LG634419905

Comments: This Laboratory Grown Diamond was created by Chemical Vapor Deposition (CVD) growth process and may include post-growth treatment. Type IIa

LABORATORY GROWN DIAMOND REPORT

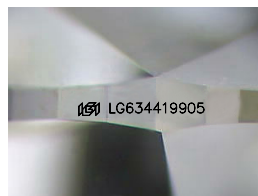
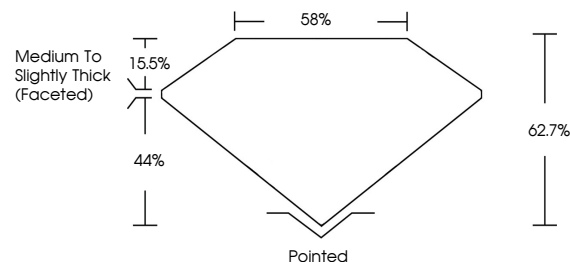
May 18, 2024 IGI Report Number LG634419905 Description LABORATORY GROWN DIAMOND Shape and Cutting Style OVAL BRILLIANT Measurements 9.64 X 6.44 X 4.04 MM

GRADING RESULTS Carat Weight 1.56 CARAT Color Grade D Clarity Grade VS 1

ADDITIONAL GRADING INFORMATION Polish EXCELLENT Symmetry EXCELLENT Fluorescence NONE Inscription(s) LG634419905

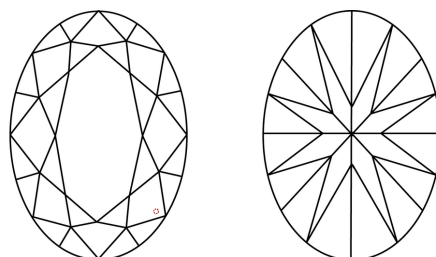
Comments: This Laboratory Grown Diamond was created by Chemical Vapor Deposition (CVD) growth process and may include post-growth treatment. Type IIa

PROPORTIONS



Sample Image Used

CLARITY CHARACTERISTICS



KEY TO SYMBOLS

Red symbols indicate internal characteristics. Green symbols indicate external characteristics.

COLOR

D E F G H I J Faint Very Light Light

CLARITY

IF VS 1-2 VS 1-2 SI 1-2 I 1-3 Internally Flawless Very Very Slightly Included Very Slightly Included Slightly Included Included

