



ELECTRONIC COPY

LABORATORY GROWN DIAMOND REPORT

LG634420749
Report verification at igi.org

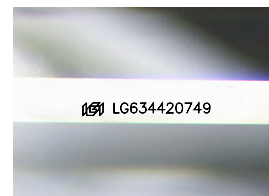
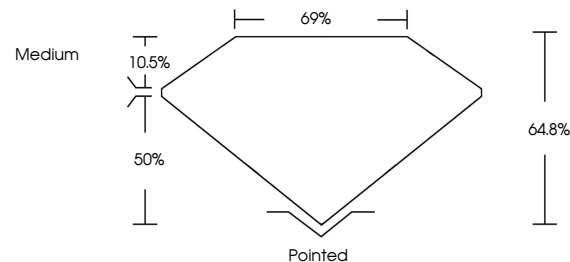
| | |
|-------------------------|--------------------------|
| May 18, 2024 | |
| IGI Report Number | LG634420749 |
| Description | LABORATORY GROWN DIAMOND |
| Shape and Cutting Style | SQUARE EMERALD CUT |
| Measurements | 8.95 X 8.87 X 5.75 MM |
| GRADING RESULTS | |
| Carat Weight | 4.19 CARATS |
| Color Grade | F |
| Clarity Grade | VS 2 |

ADDITIONAL GRADING INFORMATION

| | |
|----------------|----------------|
| Polish | EXCELLENT |
| Symmetry | EXCELLENT |
| Fluorescence | NONE |
| Inscription(s) | 15 LG634420749 |

Comments: This Laboratory Grown Diamond was created by Chemical Vapor Deposition (CVD) growth process and may include post-growth treatment.
Type IIa

PROPORTIONS



Sample Image Used

COLOR

D E F G H I J Faint Very Light Light

CLARITY

| IF | VVS ¹⁻² | VS ¹⁻² | SI ¹⁻² | I ¹⁻³ |
|---------------------|-----------------------------|------------------------|-------------------|------------------|
| Internally Flawless | Very Very Slightly Included | Very Slightly Included | Slightly Included | Included |



© IGI 2020, International Gemological Institute

FD - 10 20

www.igi.org

DIAMOND REPORT



May 18, 2024

IGI Report Number **LG634420749**

| | |
|-------------|--------------------------|
| Description | LABORATORY GROWN DIAMOND |
|-------------|--------------------------|

Shape and Cutting Style **SQUARE EMERALD CUT**

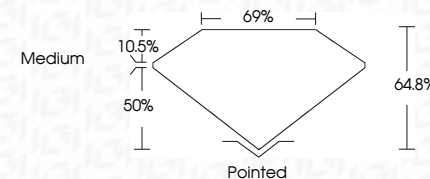
Measurements **8.95 X 8.87 X 5.75 MM**

GRADING RESULTS

Carat Weight **4.19 CARATS**

Color Grade F

Clarity Grade VS 2



ADDITIONAL GRADING INFORMATION

Polish **EXCELLENT**Symmetry **EXCELLENT**Fluorescence **NONE**Inscription(s)  LG634420749

Comments: This Laboratory Grown Diamond was created by Chemical Vapor Deposition (CVD) growth process and may include post-growth treatment.
Type IIa



May 18, 2024
GI Report No LG634420749
SQUARE EMERALD CUT

| | | |
|------------------------------|---------------|--------------------|
| 0.95 X 0.87 X 5.75 MM | Carat Weight | 4.19 CARATS |
| | Color Grade | F |
| | Clarity Grade | VS 2 |
| | Depth | 64.8% |
| | Table | 69% |
| | Girdle | Medium |
| | Culet | Pointed |
| | Polish | EXCELLENT |
| | Symmetry | EXCELLENT |
| | Fluorescence | NONE |

Comments:
This Laboratory Grown Diamond was created by Chemical Vapor Deposition (CVD) growth process and may include post-growth treatment.