

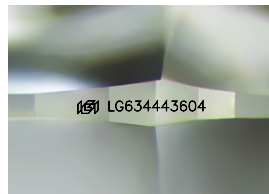
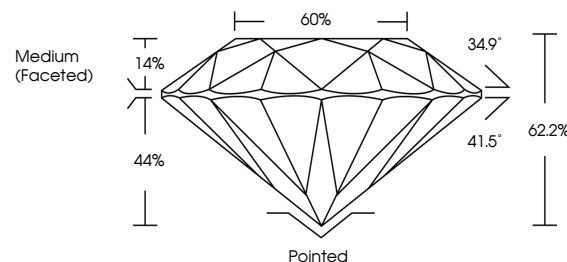


**ELECTRONIC COPY**

## LABORATORY GROWN DIAMOND REPORT

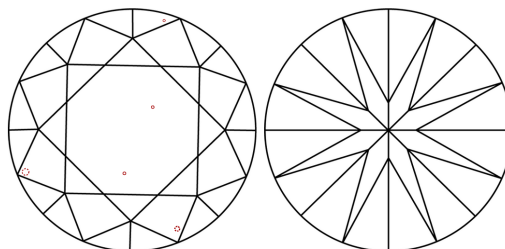
LG634443604  
Report verification at [lgi.org](https://lgi.org)

## PROPORTIONS



Sample Image Used

## CLARITY CHARACTERISTICS



## KEY TO SYMBOLS

Red symbols indicate internal characteristics.  
Green symbols indicate external characteristics.

**COLOR**

D E F G H I J Faint Very Light Light

## CLARITY

IF	VVS <sup>1-2</sup>	VS <sup>1-2</sup>	SI <sup>1-2</sup>	I <sup>1-3</sup>
Internally Flawless	Very Very Slightly Included	Very Slightly Included	Slightly Included	Included



© IGI 2020, International Gemological Institute

FD - 10 20

**www.igi.org**

## DIAMOND REPORT



May 18, 2024

IGI Report Number LG634443604

Description **LABORATORY GROWN DIAMOND**Shape and Cutting Style **ROUND BRILLIANT**

Measurements 7.53 - 7.55 X 4.69 MM

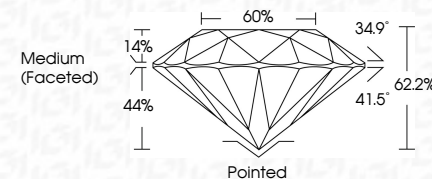
## GRADING RESULTS

Carat Weight 1.67 CARAT

Color Grade E

Clarity Grade VS 1

Cut Grade **EXCELLENT**



### ADDITIONAL GRADING INFORMATION

Polish **EXCELLENT**Symmetry **EXCELLENT**Fluorescence **NONE**Inscription(s)  LG634443604

Comments: This Laboratory Grown Diamond was created by Chemical Vapor Deposition (CVD) growth process and may include post-growth treatment.  
Type IIa



IG

May 18, 2024  
IGI Report No LG634443604  
ROUND BRILLIANT

7.53 - 7.55 X 4.69 MM  
Carat Weight 1.67 CARAT  
Color Grade F

Clarity Grade	VS 1
Cut Grade	EXCELLENT
Depth	62.2%
Table	60%
Grille	Medium (Enriched)

Material	Pointed
Culet	EXCELLENT
Polish	EXCELLENT
Symmetry	NONE
Fluorescence	4681UG43M4P4504
Inclusions (n)	

**Comments:**  
This Laboratory Grown Diamond was created by Chemical Vapor Deposition (CVD) growth process and may include post-growth treatment.