

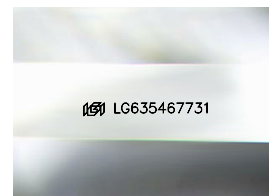
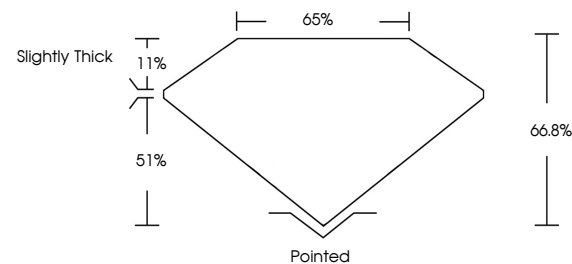


ELECTRONIC COPY

LABORATORY GROWN DIAMOND REPORT

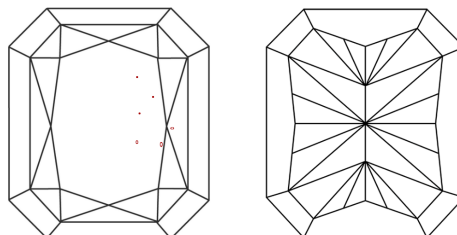
LG635467731
Report verification at igi.org

PROPORTIONS



Sample Image Used

CLARITY CHARACTERISTICS



KEY TO SYMBOLS

Red symbols indicate internal characteristics.
Green symbols indicate external characteristics.

COLOR

D E F G H I J Faint Very Light Light

CLARITY

IF	VVS ¹⁻²	VS ¹⁻²	SI ¹⁻²	I ¹⁻³
Internally Flawless	Very Very Slightly Included	Very Slightly Included	Slightly Included	Included



© IGI 2020, International Gemological Institute

FD - 10 20

www.igi.org

DIAMOND REPORT



May 17, 2024

IGI Report Number **LG635467731**Description **LABORATORY GROWN DIAMOND**

Shape and Cutting Style

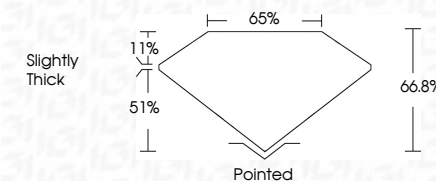
Measurements **8.58 X 6.14 X 4.10 MM**

GRADING RESULTS

Carat Weight 1.91 CARAT

Color Grade E

Clarity Grade VS 2



ADDITIONAL GRADING INFORMATION

Polish EXCELLENT

Symmetry **EXCELLENT**Fluorescence **NONE**Inscription(s)  LG635467731

Comments: This Laboratory Grown Diamond was created by Chemical Vapor Deposition (CVD) growth process and may include post-growth treatment.
Type IIa



May 17, 2024	GI Report No. LG93647731	CLUTTERED RECT. MODIFIED BRILLANT
6.58 X 4.14 X 1.01 MM	Card Weight	1.91 CARAT
Color Grade	Color	E
Clarity Grade	Clarity	VS 2
Depth	Depth	64.6%
Table	Table	65%
Girdle	Girdle	Slightly Thick
Quiet	Quiet	Polished
Polish	Polish	EXCELLENT
Symmetry	Symmetry	EXCELLENT
Fluorescence	Fluorescence	NONE
Inscriptions(s)	Inscriptions(s)	lg9 LG93647731

Comments:

The Laboratory Crown Diamond was a natural colorless diamond with no detectable inclusions. It was cut with a standard CVD growth process and may include post-growth treatment.

Type Ila