



ELECTRONIC COPY

LABORATORY GROWN DIAMOND REPORT

May 31, 2024	
IGI Report Number	LG636499942
Description	LABORATORY GROWN DIAMOND
Shape and Cutting Style	ROUND BRILLIANT
Measurements	9.14 - 9.27 X 5.55 MM

GRADING RESULTS

Carat Weight	2.91 CARATS
Color Grade	F
Clarity Grade	VS 1
Cut Grade	EXCELLENT

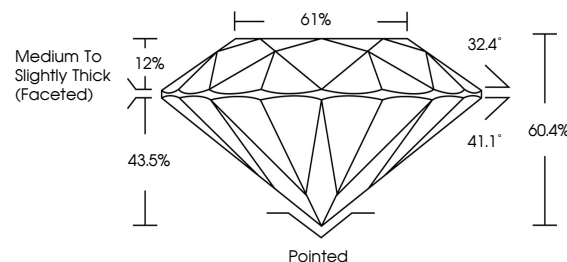
ADDITIONAL GRADING INFORMATION

Polish	EXCELLENT
Symmetry	EXCELLENT
Fluorescence	NONE
Inscription(s)	15 LG636499942

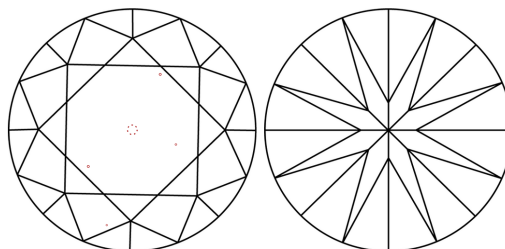
Comments: This Laboratory Grown Diamond was created by Chemical Vapor Deposition (CVD) growth process.
Type IIa

LG636499942
Report verification at lgi.org

PROPORTIONS

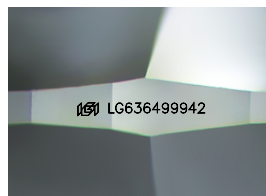


CLARITY CHARACTERISTICS



KEY TO SYMBOLS

Red symbols indicate internal characteristics.
Green symbols indicate external characteristics.



Sample Image Used

COLOR

D E F G H I J Faint Very Light Light

CLARITY

IF	VVS ¹⁻²	VS ¹⁻²	SI ¹⁻²	I ¹⁻³
Internally Flawless	Very Very Slightly Included	Very Slightly Included	Slightly Included	Included



© IGI 2020, International Gemological Institute

FD - 10 20

www.igi.org

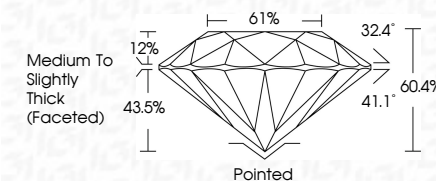
DIAMOND REPORT



May 31, 2024	
IGI Report Number	LG636499942
Description	LABORATORY GROWN DIAMOND
Shape and Cutting Style	ROUND BRILLIANT
Measurements	9.14 - 9.27 X 5.55 MM

GRADING RESULTS

Carat Weight	2.91 CARATS
Color Grade	F
Clarity Grade	VS 1
Cut Grade	EXCELLENT



ADDITIONAL GRADING INFORMATION

Polish	EXCELLENT
Symmetry	EXCELLENT
Fluorescence	NONE
Inscription(s)	(修) LG636499942
Comments: This Laboratory Grown Diamond was created by Chemical Vapor Deposition (CVD) growth process.	
Type IIa	



IG

May 31, 2024	291 CARATS	VS 1	60.4%	61%	Painted	EXCELLENT	EXCELLENT	NONE	#61US636499942
GI Report No LG536499942		EXCELLENT		Medium To Slightly Thick (faceted)					
ROUND BRILLIANT									
14 - 12.7 X 5.55 MM									
Color Weight									
Color Grade									
Clarity Grade									
Cut Grade									
Depth									
Table									
Grade									
Culet									
Polish									
Symmetry									
Fluorescence									
Inscriptions(s)									

Comments:
 The Laboratory Grown Diamond was
 created by Chemical Vapor Deposition
 growth process.
 Type IIa