



ELECTRONIC COPY

LG637460481
Report verification at igi.org



June 7, 2024

IGI Report Number **LG637460481**

Description **LABORATORY GROWN DIAMOND**

Shape and Cutting Style **CUSHION BRILLIANT**

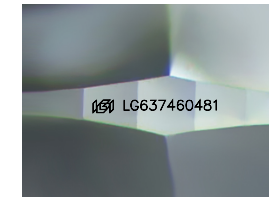
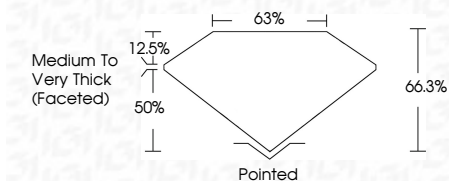
Measurements **7.15 X 5.52 X 3.66 MM**

GRADING RESULTS

Carat Weight **1.16 CARAT**

Color Grade **E**

Clarity Grade **VS 2**



Sample Image Used

ADDITIONAL GRADING INFORMATION

Polish **EXCELLENT**

Symmetry **EXCELLENT**

Fluorescence **NONE**

Inscription(s) **IGI LG637460481**

Comments: This Laboratory Grown Diamond was created by Chemical Vapor Deposition (CVD) growth process. Type IIa



June 7, 2024	IGI Report No LG637460481	1.16 CARAT	E	VS 2	66.3%	50%	Medium to Very Thick (Faceted)	Pointed
CUSHION BRILLIANT								
7.15 X 5.52 X 3.66 MM								
Color Grade								
Clarity Grade								
Depth								
Table								
Grailes								
Culet								
Polish								
Symmetry								
Fluorescence								
Inscription(s)								

Comments: This Laboratory Grown Diamond was created by Chemical Vapor Deposition (CVD) growth process. Type IIa

June 7, 2024
IGI Report Number **LG637460481**
Description **LABORATORY GROWN DIAMOND**
Shape and Cutting Style **CUSHION BRILLIANT**
Measurements **7.15 X 5.52 X 3.66 MM**

GRADING RESULTS

Carat Weight **1.16 CARAT**

Color Grade **E**

Clarity Grade **VS 2**

ADDITIONAL GRADING INFORMATION

Polish **EXCELLENT**

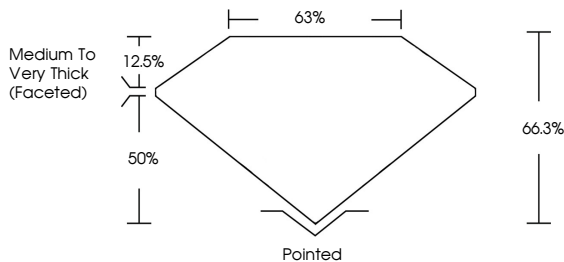
Symmetry **EXCELLENT**

Fluorescence **NONE**

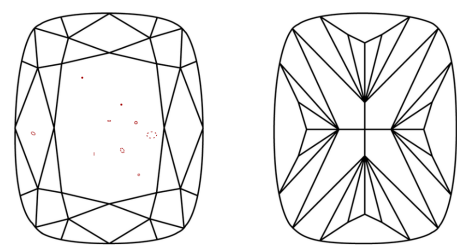
Inscription(s) **IGI LG637460481**

Comments: This Laboratory Grown Diamond was created by Chemical Vapor Deposition (CVD) growth process. Type IIa

PROPORTIONS



CLARITY CHARACTERISTICS



KEY TO SYMBOLS

Red symbols indicate internal characteristics.
Green symbols indicate external characteristics.

COLOR

D	E	F	G	H	I	J	Faint	Very Light	Light
---	---	---	---	---	---	---	-------	------------	-------

CLARITY

IF	VS ¹⁻²	VS ¹⁻²	SI ¹⁻²	I ¹⁻³
Internally Flawless	Very Very Slightly Included	Very Slightly Included	Slightly Included	Included

