



ELECTRONIC COPY

LG638492535
Report verification at igi.org



June 7, 2024

IGI Report Number **LG638492535**

Description **LABORATORY GROWN DIAMOND**

Shape and Cutting Style **PRINCESS CUT**

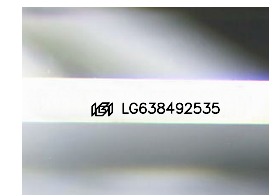
Measurements **8.51 X 8.38 X 5.71 MM**

GRADING RESULTS

Carat Weight **3.49 CARATS**

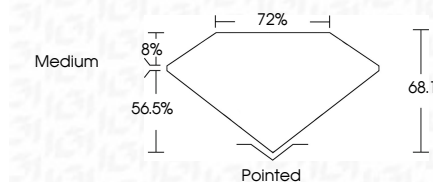
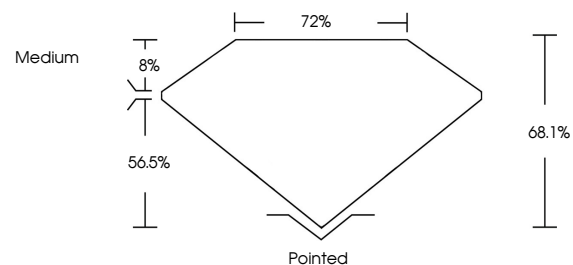
Color Grade **E**

Clarity Grade **VS 1**



Sample Image Used

PROPORTIONS



June 7, 2024

IGI Report Number **LG638492535**

Description **LABORATORY GROWN DIAMOND**

Shape and Cutting Style **PRINCESS CUT**

Measurements **8.51 X 8.38 X 5.71 MM**

GRADING RESULTS

Carat Weight **3.49 CARATS**

Color Grade **E**

Clarity Grade **VS 1**

ADDITIONAL GRADING INFORMATION

Polish **EXCELLENT**

Symmetry **EXCELLENT**

Fluorescence **NONE**

Inscription(s) **IGI LG638492535**

Comments: This Laboratory Grown Diamond was created by Chemical Vapor Deposition (CVD) growth process.
Type IIa

COLOR

D E F G H I J Faint Very Light Light

CLARITY

IF	VS ¹⁻²	VS ¹⁻²	SI ¹⁻²	I ¹⁻³
Internally Flawless	Very Very Slightly Included	Very Slightly Included	Slightly Included	Included

ADDITIONAL GRADING INFORMATION

Polish **EXCELLENT**

Symmetry **EXCELLENT**

Fluorescence **NONE**

Inscription(s) **IGI LG638492535**

Comments: This Laboratory Grown Diamond was created by Chemical Vapor Deposition (CVD) growth process.
Type IIa



IGI

June 7, 2024
IGI Report No. LG638492535
PRINCESS CUT

8.51 X 8.38 X 5.71 MM

Carat Weight **3.49 CARATS**

Color Grade **E**

Clarity Grade **VS 1**

Depth **68.1%**

Table **8%**

Girdle **Medium**

Culet **Pointed**

Polish **EXCELLENT**

Symmetry **EXCELLENT**

Fluorescence **NONE**

Inscription(s) **IGI LG638492535**

Comments: This Laboratory Grown Diamond was created by Chemical Vapor Deposition (CVD) growth process.
Type IIa