

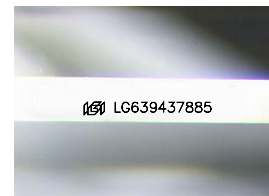
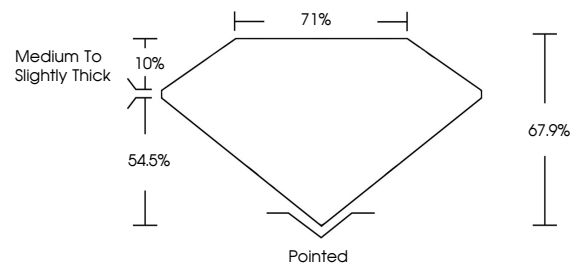


ELECTRONIC COPY

LABORATORY GROWN DIAMOND REPORT

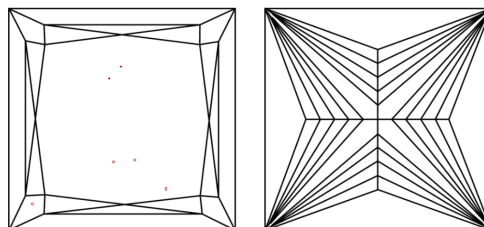
LG639437885
Report verification at igi.org

PROPORTIONS



Sample Image Used

CLARITY CHARACTERISTICS



KEY TO SYMBOLS

Red symbols indicate internal characteristics.
Green symbols indicate external characteristics.

COLOR

D E F G H I J Faint Very Light Light

CLARITY

| IF | VVS ^{1,2} | VS ^{1,2} | SI ^{1,2} | I ^{1,3} |
|---------------------|-----------------------------|------------------------|-------------------|------------------|
| Internally Flawless | Very Very Slightly Included | Very Slightly Included | Slightly Included | Included |

LABORATORY GROWN DIAMOND REPORT



June 21, 2024

IGI Report Number **LG639437885**

| | |
|-------------|--------------------------|
| Description | LABORATORY GROWN DIAMOND |
|-------------|--------------------------|

Shape and Cutting Style **PRINCESS CUT**

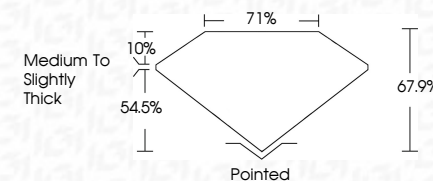
Measurements **6.71 X 6.67 X 4.53 MM**

GRADING RESULTS

Carat Weight **1.81 CARAT**

| | |
|-------------|---|
| Color Grade | E |
|-------------|---|

Clarity Grade VS 1



ADDITIONAL GRADING INFORMATION

Polish **EXCELLENT**Symmetry **EXCELLENT**Fluorescence **NONE**Inscription(s) LG639437885

Comments: This Laboratory Grown Diamond was created by Chemical Vapor Deposition (CVD) growth process.
Type IIa



© IGI 2020, International Gemological Institute

FD - 10 20



THIS DOCUMENT WAS PRODUCED WITH THE FOLLOWING SECURITY MEASURES: SPECIAL DOCUMENT PAPER, INK SCREENS, WATERMARK, BACKGROUND DESIGNS, HOLOGRAM AND OTHER SECURITY FEATURES NOT LISTED AND DO EXCEED DOCUMENT SECURITY INDUSTRY GUIDELINES

June 21, 2024
IGI Report No LG639437885
PRINCESS CIT

| | | |
|------------------------|----------------|--------------------------|
| 6.711 X 6.67 X 4.53 MM | Carat Weight | 1.81 CARAT |
| | Color Grade | E |
| | Clarity Grade | VS 1 |
| | Depth | 67.9% |
| | Table | 71% |
| | Girdle | Medium To Slightly Thick |
| | Culet | Pointed |
| | Polish | EXCELLENT |
| | Symmetry | EXCELLENT |
| | Fluorescence | NONE |
| | Annotations(s) | see ICA50437985 |

Comments:
This Laboratory Grown Diamond was created by Chemical Vapor Deposition (CVD) growth process.