



**ELECTRONIC COPY**

LG639461876  
Report verification at [igi.org](http://igi.org)



June 21, 2024

IGI Report Number **LG639461876**

Description **LABORATORY GROWN DIAMOND**

Shape and Cutting Style **CUT CORNERED  
RECTANGULAR MODIFIED  
BRILLIANT**

Measurements **12.87 X 8.45 X 5.36 MM**

**GRADING RESULTS**

Carat Weight **5.25 CARATS**

Color Grade **F**

Clarity Grade **VVS 2**

**LABORATORY GROWN DIAMOND REPORT**

June 21, 2024

IGI Report Number **LG639461876**

Description **LABORATORY GROWN DIAMOND**

Shape and Cutting Style **CUT CORNERED RECTANGULAR  
MODIFIED BRILLIANT**

Measurements **12.87 X 8.45 X 5.36 MM**

**GRADING RESULTS**

Carat Weight **5.25 CARATS**

Color Grade **F**

Clarity Grade **VVS 2**

**ADDITIONAL GRADING INFORMATION**

Polish **EXCELLENT**

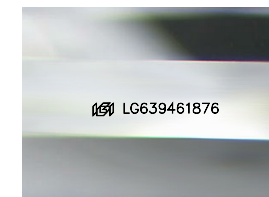
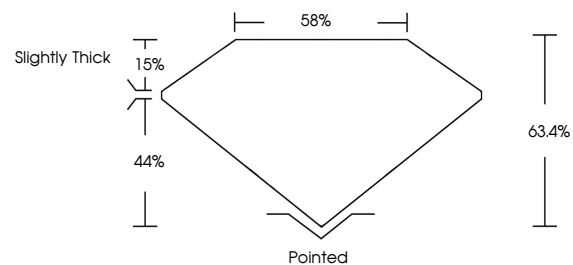
Symmetry **EXCELLENT**

Fluorescence **NONE**

Inscription(s) **IGI LG639461876**

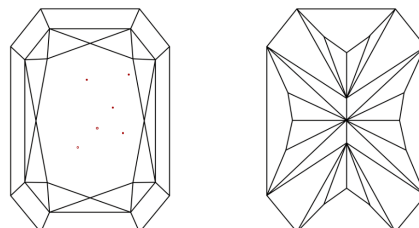
Comments: This Laboratory Grown Diamond was created by Chemical Vapor Deposition (CVD) growth process.  
Type IIa

**PROPORTIONS**



Sample Image Used

**CLARITY CHARACTERISTICS**



**KEY TO SYMBOLS**

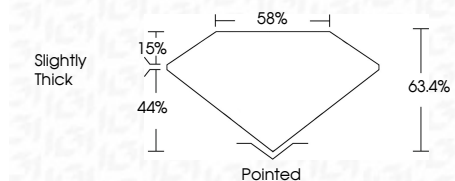
Red symbols indicate internal characteristics.  
Green symbols indicate external characteristics.

**COLOR**

D E F G H I J Faint Very Light Light

**CLARITY**

IF	VVS <sup>1-2</sup>	VS <sup>1-2</sup>	SI <sup>1-2</sup>	I <sup>1-3</sup>
Internally Flawless	Very Very Slightly Included	Very Slightly Included	Slightly Included	Included



**ADDITIONAL GRADING INFORMATION**

Polish **EXCELLENT**

Symmetry **EXCELLENT**

Fluorescence **NONE**

Inscription(s) **IGI LG639461876**

Comments: This Laboratory Grown Diamond was created by Chemical Vapor Deposition (CVD) growth process.  
Type IIa



**IGI**



June 21, 2024  
IGI Report No LG639461876  
CUT CORNERED RECT. MODIFIED BRILLIANT

5.25 CARATS  
F

12.87 X 8.45 X 5.36 MM

Color Grade  
Clarity Grade  
Table  
Girdle  
Slightly Thick

63.4%  
44%

Pointed  
EXCELLENT  
EXCELLENT  
NONE

Inscription(s)  
IGI LG639461876

Comments: This Laboratory Grown Diamond was created by Chemical Vapor Deposition (CVD) growth process.  
Type IIa