



ELECTRONIC COPY

LG640401902
Report verification at igi.org



July 9, 2024
IGI Report Number LG640401902
Description LABORATORY GROWN DIAMOND
Shape and Cutting Style EMERALD CUT
Measurements 7.70 X 5.49 X 3.66 MM
GRADING RESULTS
Carat Weight 1.63 CARAT
Color Grade E
Clarity Grade VVS 2

LABORATORY GROWN DIAMOND REPORT

July 9, 2024
IGI Report Number LG640401902
Description LABORATORY GROWN DIAMOND
Shape and Cutting Style EMERALD CUT
Measurements 7.70 X 5.49 X 3.66 MM

GRADING RESULTS

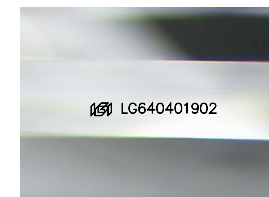
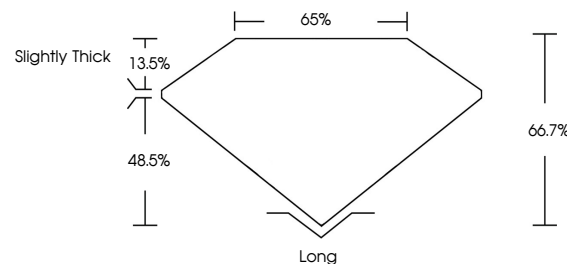
Carat Weight 1.63 CARAT
Color Grade E
Clarity Grade VVS 2

ADDITIONAL GRADING INFORMATION

Polish EXCELLENT
Symmetry EXCELLENT
Fluorescence NONE
Inscription(s) LG640401902

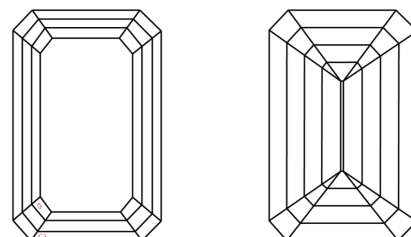
Comments: This Laboratory Grown Diamond was created by Chemical Vapor Deposition (CVD) growth process. Type IIa

PROPORTIONS



Sample Image Used

CLARITY CHARACTERISTICS



KEY TO SYMBOLS

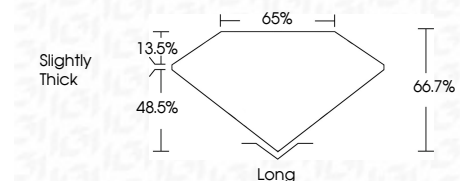
Red symbols indicate internal characteristics.
Green symbols indicate external characteristics.

COLOR

D E F G H I J Faint Very Light Light

CLARITY

IF VS 1-2 VS 1-2 SI 1-2 I 1-3
Internally Flawless Very Very Slightly Included Very Slightly Included Slightly Included Included



ADDITIONAL GRADING INFORMATION

Polish EXCELLENT
Symmetry EXCELLENT
Fluorescence NONE
Inscription(s) LG640401902
Comments: This Laboratory Grown Diamond was created by Chemical Vapor Deposition (CVD) growth process. Type IIa



IGI



July 9, 2024
IGI Report No. LG640401902
EMERALD CUT
7.70 X 5.49 X 3.66 MM
1.63 CARAT E
Color Grade VVS 2
Depth 66.7%
Table 65%
Girdle Slightly Thick
Culet Long
Polish EXCELLENT
Symmetry EXCELLENT
Fluorescence NONE
Inscription(s) LG640401902

Comments: This Laboratory Grown Diamond was created by Chemical Vapor Deposition (CVD) growth process. Type IIa