

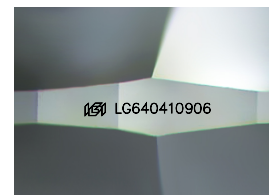
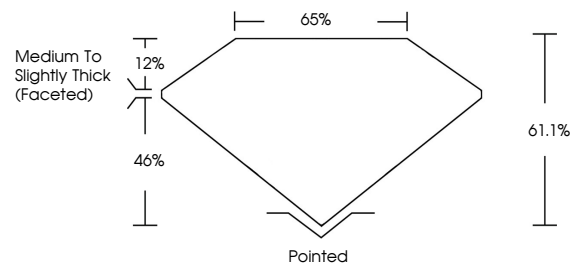


**ELECTRONIC COPY**

## LABORATORY GROWN DIAMOND REPORT

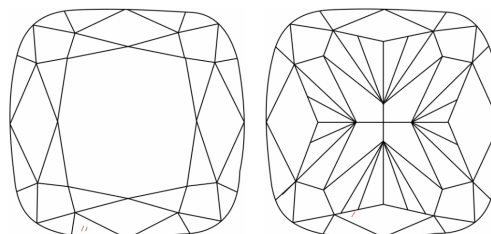
LG640410906  
Report verification at [lgi.org](https://lgi.org)

## PROPORTIONS



Sample Image Used

## CLARITY CHARACTERISTICS



### KEY TO SYMBOLS

Red symbols indicate internal characteristics.  
Green symbols indicate external characteristics.

**COLOR**

D E F G H I J Faint Very Light Light

## CLARITY

IF	VVS <sup>1,2</sup>	VS <sup>1,2</sup>	SI <sup>1,2</sup>	I <sup>1,3</sup>
Internally Flawless	Very Very Slightly Included	Very Slightly Included	Slightly Included	Included

## LABORATORY GROWN DIAMOND REPORT



June 21, 2024

IGI Report Number LG640410906

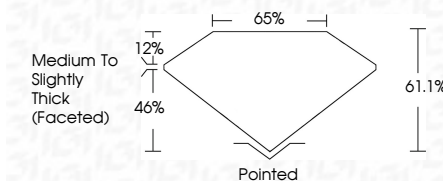
Description **LABORATORY GROWN DIAMOND**Shape and Cutting Style **SQUARE CUSHION BRILLIANT**

Measurements 6.89 X 6.56 X 4.01 MM

## GRADING RESULTS

Carat Weight 1.54 CARAT

Color Grade

Clarity Grade **VS 2**

### ADDITIONAL GRADING INFORMATION

Polish **EXCELLENT**Symmetry **EXCELLENT**Fluorescence **NONE**Inscription(s)  LG640410906

Comments: As Grown - No indication of post-growth treatment.

This Laboratory Grown Diamond was created by High Pressure High Temperature (HPHT) growth process.

Type II



June 21, 2024	
GI Report No LG40410906	
SURFACE CUSHION BRILLIANT	
6.89 X 6.56 X 4.01 MM	1.54 CABAT
Carat Weight	F
Color Grade	VVS 2
Cutty Grade	61.1%
Depth	65%
Table	Medium To Slightly Thick (pointed)
Girdle	Poished
Claw	Excellent
Polish	Excellent
Symmetry	None
Fluorescence	None
Inscription(s)	18K LG40410906
Comments:	
As Grown - No indication of post-growth treatment.	
This Laboratory Grown Diamond was created by High Pressure High Temperature (HPHT) growth process.	
Type IIa	



THIS DOCUMENT WAS PRODUCED WITH THE FOLLOWING SECURITY MEASURES: SPECIAL DOCUMENT PAPER, INK SCREENS, WATERMARK, BACKGROUND DESIGNS, HOLOGRAM AND OTHER SECURITY FEATURES NOT LISTED AND DO EXCEED DOCUMENT SECURITY INDUSTRY GUIDELINE