



ELECTRONIC COPY

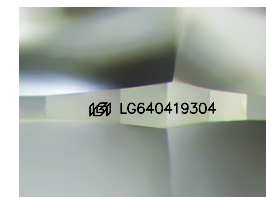
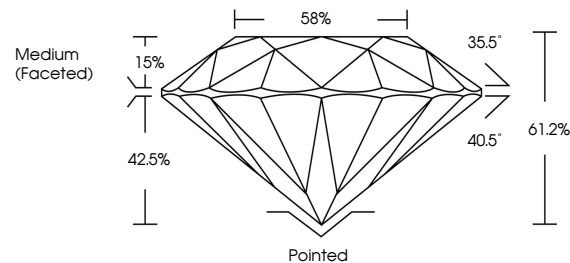
LG640419304
Report verification at igi.org



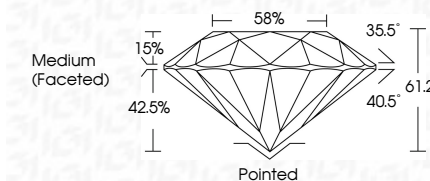
June 25, 2024
IGI Report Number **LG640419304**
Description **LABORATORY GROWN DIAMOND**
Shape and Cutting Style **ROUND BRILLIANT**
Measurements **7.70 - 7.76 X 4.73 MM**
GRADING RESULTS
Carat Weight **1.75 CARAT**
Color Grade **E**
Clarity Grade **SI 1**
Cut Grade **IDEAL**

June 25, 2024
IGI Report Number **LG640419304**
Description **LABORATORY GROWN DIAMOND**
Shape and Cutting Style **ROUND BRILLIANT**
Measurements **7.70 - 7.76 X 4.73 MM**
GRADING RESULTS
Carat Weight **1.75 CARAT**
Color Grade **E**
Clarity Grade **SI 1**
Cut Grade **IDEAL**

PROPORTIONS



Sample Image Used



ADDITIONAL GRADING INFORMATION
Polish **EXCELLENT**
Symmetry **EXCELLENT**
Fluorescence **NONE**
Inscription(s) **IGI LG640419304**

Comments: This Laboratory Grown Diamond was created by Chemical Vapor Deposition (CVD) growth process. Type IIa

COLOR

D E F G H I J Faint Very Light Light

CLARITY

IF	VS ¹⁻²	VS ¹⁻²	SI ¹⁻²	I ¹⁻³
Internally Flawless	Very Very Slightly Included	Very Slightly Included	Slightly Included	Included

ADDITIONAL GRADING INFORMATION

Polish **EXCELLENT**
Symmetry **EXCELLENT**
Fluorescence **NONE**
Inscription(s) **IGI LG640419304**
Comments: This Laboratory Grown Diamond was created by Chemical Vapor Deposition (CVD) growth process. Type IIa



IGI

June 25, 2024
IGI Report No **LG640419304**
ROUND BRILLIANT
7.70 - 7.76 X 4.73 MM
1.75 CARAT
E
SI 1
IDEAL
61.2%
58%
Medium (Faceted)
Pointed
EXCELLENT
EXCELLENT
NONE
IGI LG640419304
Comments: This Laboratory Grown Diamond was created by Chemical Vapor Deposition (CVD) growth process. Type IIa