



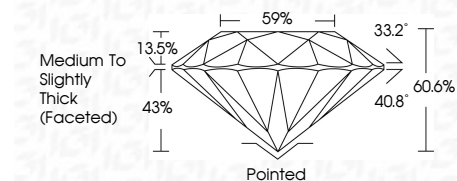
ELECTRONIC COPY

LG641486381
Report verification at igi.org



July 3, 2024
IGI Report Number LG641486381
Description LABORATORY GROWN DIAMOND
Shape and Cutting Style ROUND BRILLIANT
Measurements 6.89 - 6.93 X 4.19 MM

GRADING RESULTS
Carat Weight 1.23 CARAT
Color Grade H
Clarity Grade VS 1
Cut Grade IDEAL



ADDITIONAL GRADING INFORMATION
Polish EXCELLENT
Symmetry EXCELLENT
Fluorescence NONE
Inscription(s) IGI LG641486381
Comments: This Laboratory Grown Diamond was created by Chemical Vapor Deposition (CVD) growth process. Type IIa



July 3, 2024
IGI Report No LG641486381
ROUND BRILLIANT
6.89 - 6.93 X 4.19 MM
1.23 CARAT H
VS 1 IDEAL
60.6% 59%
Medium To Slightly Thick (Faceted)
Pointed
EXCELLENT EXCELLENT NONE
IGI LG641486381
Comments: This Laboratory Grown Diamond was created by Chemical Vapor Deposition (CVD) growth process. Type IIa

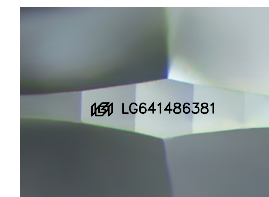
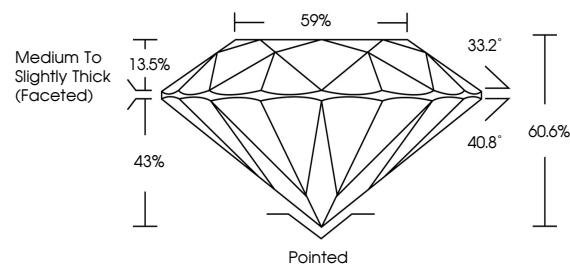
July 3, 2024
IGI Report Number LG641486381
Description LABORATORY GROWN DIAMOND
Shape and Cutting Style ROUND BRILLIANT
Measurements 6.89 - 6.93 X 4.19 MM

GRADING RESULTS
Carat Weight 1.23 CARAT
Color Grade H
Clarity Grade VS 1
Cut Grade IDEAL

ADDITIONAL GRADING INFORMATION
Polish EXCELLENT
Symmetry EXCELLENT
Fluorescence NONE
Inscription(s) IGI LG641486381

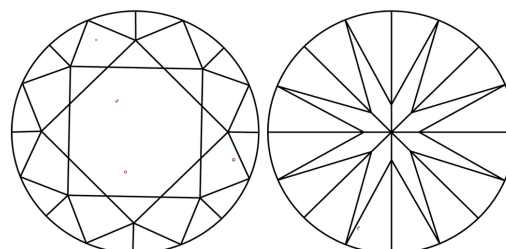
Comments: This Laboratory Grown Diamond was created by Chemical Vapor Deposition (CVD) growth process. Type IIa

PROPORTIONS



Sample Image Used

CLARITY CHARACTERISTICS



KEY TO SYMBOLS

Red symbols indicate internal characteristics.
Green symbols indicate external characteristics.

COLOR

D E F G H I J Faint Very Light Light

CLARITY

IF VS 1-2 VS 1-2 SI 1-2 I 1-3
Internally Flawless Very Very Slightly Included Very Slightly Included Slightly Included Included

