



ELECTRONIC COPY

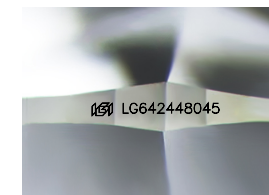
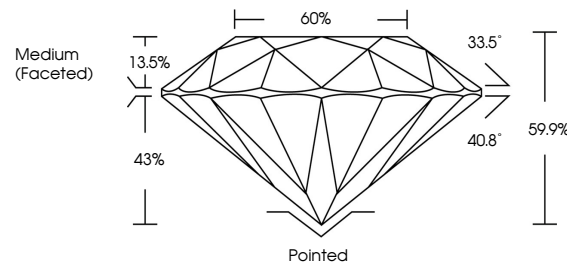
LG642448045
Report verification at igi.org



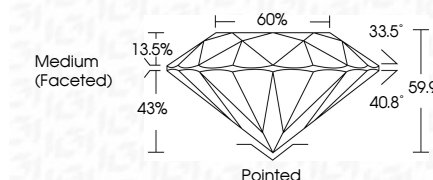
July 8, 2024
IGI Report Number LG642448045
Description LABORATORY GROWN DIAMOND
Shape and Cutting Style ROUND BRILLIANT
Measurements 8.55 - 8.59 X 5.13 MM
GRADING RESULTS
Carat Weight 2.31 CARATS
Color Grade E
Clarity Grade SI 1
Cut Grade IDEAL

July 8, 2024
IGI Report Number LG642448045
Description LABORATORY GROWN DIAMOND
Shape and Cutting Style ROUND BRILLIANT
Measurements 8.55 - 8.59 X 5.13 MM
GRADING RESULTS
Carat Weight 2.31 CARATS
Color Grade E
Clarity Grade SI 1
Cut Grade IDEAL

PROPORTIONS



Sample Image Used



ADDITIONAL GRADING INFORMATION

Polish EXCELLENT
Symmetry EXCELLENT
Fluorescence NONE
Inscription(s) IGI LG642448045

Comments: This Laboratory Grown Diamond was created by Chemical Vapor Deposition (CVD) growth process. Type IIa

COLOR

D E F G H I J Faint Very Light Light

CLARITY

IF VS 1-2 VS 1-2 SI 1-2 I 1-3
Internally Flawless Very Very Slightly Included Very Slightly Included Slightly Included Included

ADDITIONAL GRADING INFORMATION

Polish EXCELLENT
Symmetry EXCELLENT
Fluorescence NONE
Inscription(s) IGI LG642448045
Comments: This Laboratory Grown Diamond was created by Chemical Vapor Deposition (CVD) growth process. Type IIa



IGI

July 8, 2024
IGI Report No LG642448045
ROUND BRILLIANT
8.55 - 8.59 X 5.13 MM
2.31 CARATS
E
SI 1
IDEAL
59.9%
60%
Medium (Faceted)
Pointed
EXCELLENT
EXCELLENT
NONE
IGI LG642448045
Comments: This Laboratory Grown Diamond was created by Chemical Vapor Deposition (CVD) growth process. Type IIa