



ELECTRONIC COPY

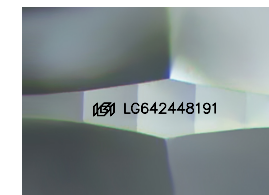
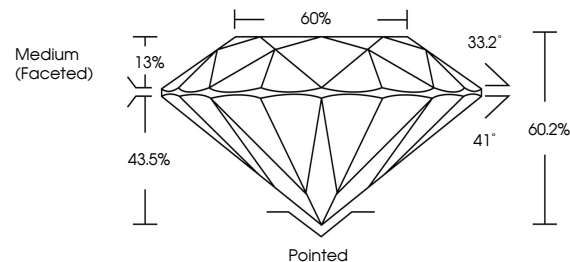
LG642448191
Report verification at igi.org



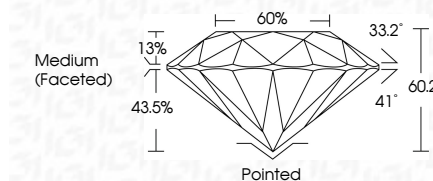
July 5, 2024
IGI Report Number LG642448191
Description LABORATORY GROWN DIAMOND
Shape and Cutting Style ROUND BRILLIANT
Measurements 8.40 - 8.43 X 5.06 MM
GRADING RESULTS
Carat Weight 2.19 CARATS
Color Grade E
Clarity Grade VS 1
Cut Grade IDEAL

July 5, 2024
IGI Report Number LG642448191
Description LABORATORY GROWN DIAMOND
Shape and Cutting Style ROUND BRILLIANT
Measurements 8.40 - 8.43 X 5.06 MM
GRADING RESULTS
Carat Weight 2.19 CARATS
Color Grade E
Clarity Grade VS 1
Cut Grade IDEAL

PROPORTIONS



Sample Image Used



ADDITIONAL GRADING INFORMATION

Polish EXCELLENT
Symmetry EXCELLENT
Fluorescence NONE
Inscription(s) IGI LG642448191

Comments: This Laboratory Grown Diamond was created by Chemical Vapor Deposition (CVD) growth process. Type IIa

ADDITIONAL GRADING INFORMATION

Polish EXCELLENT
Symmetry EXCELLENT
Fluorescence NONE
Inscription(s) IGI LG642448191
Comments: This Laboratory Grown Diamond was created by Chemical Vapor Deposition (CVD) growth process. Type IIa

COLOR

D E F G H I J Faint Very Light Light

CLARITY

IF VS 1-2 VS 1-2 SI 1-2 I 1-3
Internally Flawless Very Very Slightly Included Very Slightly Included Slightly Included Included



IGI



July 5, 2024
IGI Report No LG642448191
ROUND BRILLIANT
8.40 - 8.43 X 5.06 MM
2.19 CARATS
E
VS 1
IDEAL
60.2%
60%
Medium (Faceted)
Pointed
EXCELLENT
EXCELLENT
NONE
IGI LG642448191
Comments: This Laboratory Grown Diamond was created by Chemical Vapor Deposition (CVD) growth process. Type IIa