



ELECTRONIC COPY

LG642471835 Report verification at igi.org



July 8, 2024 IGI Report Number LG642471835 Description LABORATORY GROWN DIAMOND Shape and Cutting Style CUT CORNERED RECTANGULAR MODIFIED BRILLIANT Measurements 8.23 X 5.89 X 3.84 MM GRADING RESULTS Carat Weight 1.51 CARAT Color Grade G Clarity Grade VS 2

LABORATORY GROWN DIAMOND REPORT

July 8, 2024 IGI Report Number LG642471835 Description LABORATORY GROWN DIAMOND Shape and Cutting Style CUT CORNERED RECTANGULAR MODIFIED BRILLIANT Measurements 8.23 X 5.89 X 3.84 MM

GRADING RESULTS

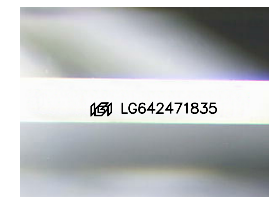
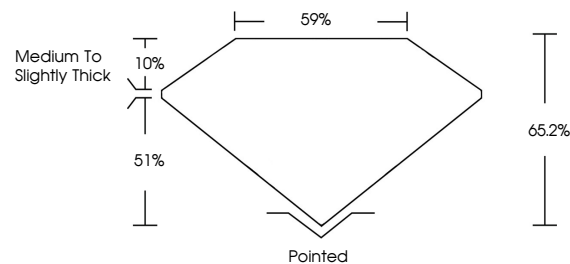
Carat Weight 1.51 CARAT Color Grade G Clarity Grade VS 2

ADDITIONAL GRADING INFORMATION

Polish EXCELLENT Symmetry EXCELLENT Fluorescence NONE Inscription(s) LG642471835

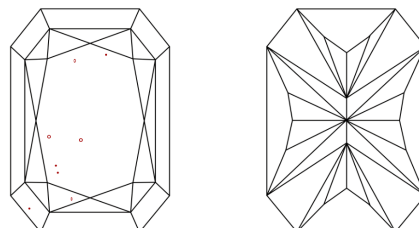
Comments: This Laboratory Grown Diamond was created by Chemical Vapor Deposition (CVD) growth process. Type IIa

PROPORTIONS



Sample Image Used

CLARITY CHARACTERISTICS



KEY TO SYMBOLS

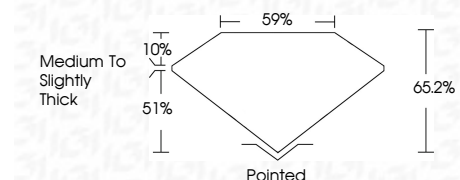
Red symbols indicate internal characteristics. Green symbols indicate external characteristics.

COLOR

D E F G H I J Faint Very Light Light

CLARITY

Table with columns for clarity grades: IF (Internally Flawless), VVS 1-2 (Very Very Slightly Included), VS 1-2 (Very Slightly Included), SI 1-2 (Slightly Included), I 1-3 (Included).



ADDITIONAL GRADING INFORMATION

Polish EXCELLENT Symmetry EXCELLENT Fluorescence NONE Inscription(s) LG642471835 Comments: This Laboratory Grown Diamond was created by Chemical Vapor Deposition (CVD) growth process. Type IIa



July 8, 2024 IGI Report No LG642471835 CUT CORNERED RECT. MODIFIED BRILLIANT 8.23 X 5.89 X 3.84 MM 1.51 CARAT G VS 2 65.2% 59% Medium to Slightly Thick Pointed EXCELLENT EXCELLENT NONE NONE LG642471835 Comments: This Laboratory Grown Diamond was created by Chemical Vapor Deposition (CVD) growth process. Type IIa