



**ELECTRONIC COPY**

LG642476495  
Report verification at igi.org



July 9, 2024  
IGI Report Number **LG642476495**  
Description **LABORATORY GROWN DIAMOND**  
Shape and Cutting Style **EMERALD CUT**  
Measurements **13.59 X 9.19 X 5.93 MM**

**GRADING RESULTS**

Carat Weight **7.54 CARATS**  
Color Grade **F**  
Clarity Grade **VS 1**

July 9, 2024  
IGI Report Number **LG642476495**  
Description **LABORATORY GROWN DIAMOND**  
Shape and Cutting Style **EMERALD CUT**  
Measurements **13.59 X 9.19 X 5.93 MM**

**GRADING RESULTS**

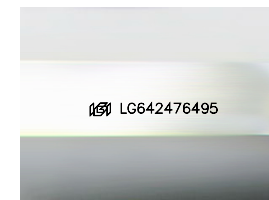
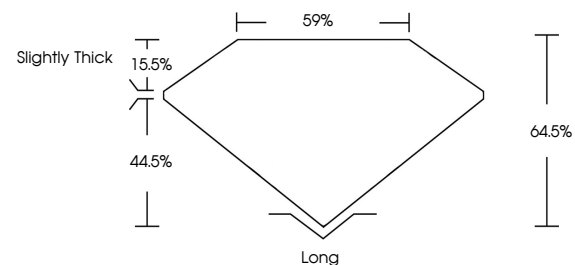
Carat Weight **7.54 CARATS**  
Color Grade **F**  
Clarity Grade **VS 1**

**ADDITIONAL GRADING INFORMATION**

Polish **EXCELLENT**  
Symmetry **EXCELLENT**  
Fluorescence **NONE**  
Inscription(s) **IGI LG642476495**

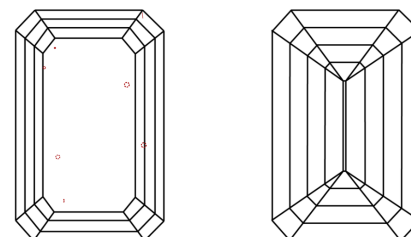
Comments: This Laboratory Grown Diamond was created by Chemical Vapor Deposition (CVD) growth process.  
Type IIa

**PROPORTIONS**



Sample Image Used

**CLARITY CHARACTERISTICS**



**KEY TO SYMBOLS**

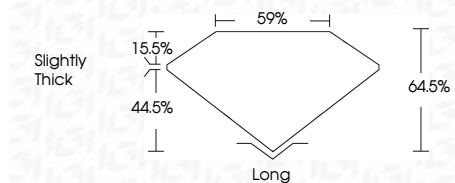
Red symbols indicate internal characteristics.  
Green symbols indicate external characteristics.

**COLOR**

D E F G H I J Faint Very Light Light

**CLARITY**

IF	VS <sup>1-2</sup>	VS <sup>1-2</sup>	SI <sup>1-2</sup>	I <sup>1-3</sup>
Internally Flawless	Very Very Slightly Included	Very Slightly Included	Slightly Included	Included



**ADDITIONAL GRADING INFORMATION**

Polish **EXCELLENT**  
Symmetry **EXCELLENT**  
Fluorescence **NONE**  
Inscription(s) **IGI LG642476495**  
Comments: This Laboratory Grown Diamond was created by Chemical Vapor Deposition (CVD) growth process.  
Type IIa



**IGI**

July 9, 2024  
IGI Report No. **LG642476495**  
**EMERALD CUT**

**7.54 CARATS**  
F

**13.59 X 9.19 X 5.93 MM**

Carat Weight  
Color Grade  
Clarity Grade  
Table  
Girdle  
Culet  
Polish  
Symmetry  
Fluorescence  
Inscription(s)

**7.54 CARATS**  
**F**  
**VS 1**  
**64.5%**  
**59%**  
**Slightly Thick**  
**Long**  
**EXCELLENT**  
**EXCELLENT**  
**NONE**  
**IGI LG642476495**

Comments: This Laboratory Grown Diamond was created by Chemical Vapor Deposition (CVD) growth process.  
Type IIa