



**ELECTRONIC COPY**

## LABORATORY GROWN DIAMOND REPORT

July 12, 2024	
IGI Report Number	LG642497800
Description	LABORATORY GROWN DIAMOND
Shape and Cutting Style	CUT CORNERED RECTANGULAR MODIFIED BRILLIANT
Measurements	8.30 X 5.49 X 3.76 MM

## GRADING RESULTS

Carat Weight	1.51 CARAT
Color Grade	F
Clarity Grade	VS 1

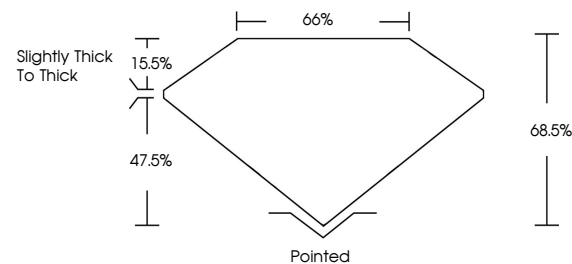
### ADDITIONAL GRADING INFORMATION

Polish	EXCELLENT
Symmetry	EXCELLENT
Fluorescence	NONE
Inscription(s)	 LG642497800

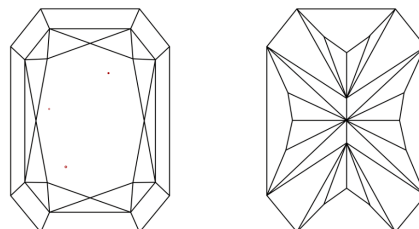
Comments: This Laboratory Grown Diamond was created by Chemical Vapor Deposition (CVD) growth process.  
Type IIa

LG642497800  
Report verification at [lgi.org](https://lgi.org)

## PROPORTIONS

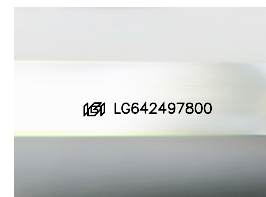


## CLARITY CHARACTERISTICS



## KEY TO SYMBOLS

Red symbols indicate internal characteristics.  
Green symbols indicate external characteristics.



Sample Image Used

## COLOR

D E F G H I J Faint Very Light Light

## CLARITY

IF	VVS <sup>1,2</sup>	VS <sup>1,2</sup>	SI <sup>1,2</sup>	I <sup>1,3</sup>
Internally Flawless	Very Very Slightly Included	Very Slightly Included	Slightly Included	Included



© IGI 2020, International Gemological Institute

FD - 10 20

**www.igi.org**

## LABORATORY GROWN DIAMOND REPORT

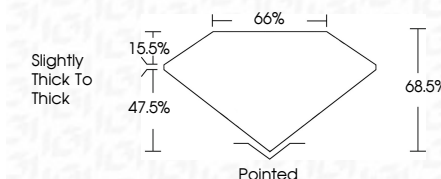


July 12, 2024	
IGI Report Number	LG642497800
Description	LABORATORY GROWN DIAMOND
Shape and Cutting Style	CUT CORNERED RECTANGULAR MODIFIED BRILLIANT

Measurements **8.30 X 5.49 X 3.76 MM**

## GRADING RESULTS

Carat Weight	1.51 CARAT
Color Grade	F
Clarity Grade	VS 1



### ADDITIONAL GRADING INFORMATION

Polish	EXCELLENT
Symmetry	EXCELLENT
Fluorescence	NONE
Inscription(s)	15 LG 642497800

Comments: This Laboratory Grown Diamond was created by Chemical Vapor Deposition (CVD) growth process.  
Type IIa



July 12, 2024	Report No. LG54267800	CU CORNERED RECT. MODIFIED BRILLIANT
3.30 X 5.42 X 3.76 MM	Carat Weight	1.51 CARAT
	Color Grade	F
	Clarity Grade	VS 1
	Depth	64.5%
	Table	66%
	Girdle	Slightly Thick to Thick
	Culet	Pointed
	Polish	EXCELLENT
	Symmetry	EXCELLENT
	Fluorescence	NONE
	Inscriptions(s)	1891 LG54267800

Comments:

The Laboratory Grown Diamond was analyzed using Laser Vapor Deposition (LVD) growth process.

Type IIG