



ELECTRONIC COPY

LABORATORY GROWN DIAMOND REPORT

July 19, 2024  
IGI Report Number LG644402233  
Description LABORATORY GROWN DIAMOND  
Shape and Cutting Style PRINCESS CUT  
Measurements 6.98 X 6.86 X 4.96 MM

GRADING RESULTS

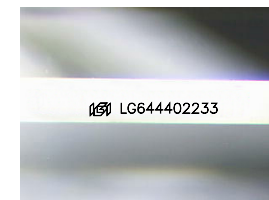
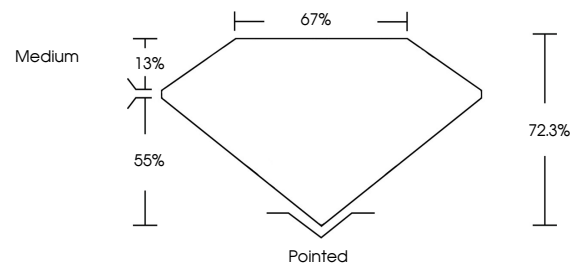
Carat Weight 2.11 CARATS  
Color Grade D  
Clarity Grade VS 1

ADDITIONAL GRADING INFORMATION

Polish EXCELLENT  
Symmetry EXCELLENT  
Fluorescence NONE  
Inscription(s) LG644402233

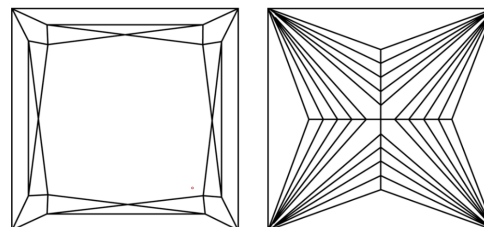
Comments: This Laboratory Grown Diamond was created by Chemical Vapor Deposition (CVD) growth process.  
Type IIa

PROPORTIONS



Sample Image Used

CLARITY CHARACTERISTICS



KEY TO SYMBOLS

Red symbols indicate internal characteristics.  
Green symbols indicate external characteristics.

COLOR

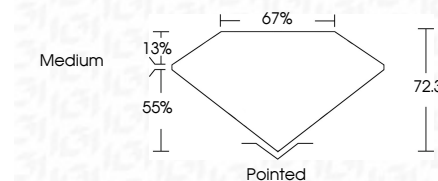
D E F G H I J Faint Very Light Light

CLARITY

IF VS 1-2 VS 1-2 SI 1-2 I 1-3  
Internally Flawless Very Very Slightly Included Very Slightly Included Slightly Included Included



July 19, 2024  
IGI Report Number LG644402233  
Description LABORATORY GROWN DIAMOND  
Shape and Cutting Style PRINCESS CUT  
Measurements 6.98 X 6.86 X 4.96 MM  
GRADING RESULTS  
Carat Weight 2.11 CARATS  
Color Grade D  
Clarity Grade VS 1



ADDITIONAL GRADING INFORMATION

Polish EXCELLENT  
Symmetry EXCELLENT  
Fluorescence NONE  
Inscription(s) LG644402233  
Comments: This Laboratory Grown Diamond was created by Chemical Vapor Deposition (CVD) growth process.  
Type IIa



IGI



July 19, 2024  
IGI Report No LG644402233  
PRINCESS CUT  
6.98 X 6.86 X 4.96 MM  
2.11 CARATS  
Color Grade D  
Clarity Grade VS 1  
Depth 55%  
Table 13%  
Girdle 67%  
Medium  
Pointed  
Polish EXCELLENT  
Symmetry EXCELLENT  
Fluorescence NONE  
Inscription(s) LG644402233  
Comments: This Laboratory Grown Diamond was created by Chemical Vapor Deposition (CVD) growth process.  
Type IIa