



ELECTRONIC COPY

LG645409720
Report verification at igi.org



August 1, 2024

IGI Report Number **LG645409720**

Description **LABORATORY GROWN DIAMOND**

Shape and Cutting Style **EMERALD CUT**

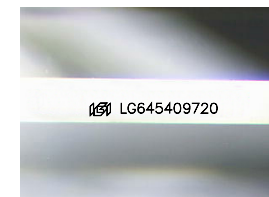
Measurements **7.90 X 5.63 X 3.85 MM**

GRADING RESULTS

Carat Weight **1.74 CARAT**

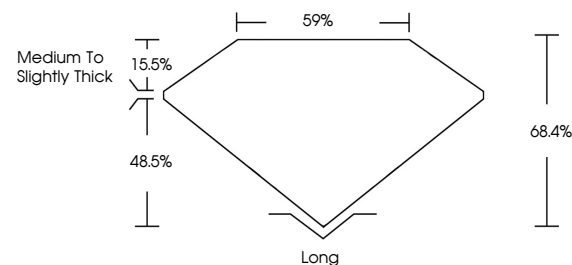
Color Grade **D**

Clarity Grade **VS 1**

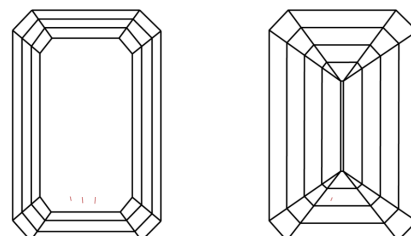


Sample Image Used

PROPORTIONS



CLARITY CHARACTERISTICS



KEY TO SYMBOLS

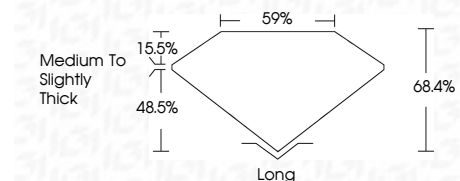
Red symbols indicate internal characteristics.
Green symbols indicate external characteristics.

COLOR

D E F G H I J Faint Very Light Light

CLARITY

IF	VS ¹⁻²	VS ¹⁻²	SI ¹⁻²	I ¹⁻³
Internally Flawless	Very Very Slightly Included	Very Slightly Included	Slightly Included	Included



ADDITIONAL GRADING INFORMATION

Polish **EXCELLENT**

Symmetry **EXCELLENT**

Fluorescence **NONE**

Inscription(s) **IGI LG645409720**

Comments: As Grown - No indication of post-growth treatment.

This Laboratory Grown Diamond was created by High Pressure High Temperature (HPHT) growth process.

Type II



August 1, 2024
IGI Report No. LG645409720
EMERALD CUT

7.90 X 5.63 X 3.85 MM

Carat Weight **1.74 CARAT**

Color Grade **D**

Clarity Grade **VS 1**

Depth **48.4%**

Table **15.5%**

Girdle **Medium to Slightly Thick**

Culet **Long**

Polish **EXCELLENT**

Symmetry **EXCELLENT**

Fluorescence **NONE**

Inscription(s) **IGI LG645409720**

Comments: As Grown - No indication of post-growth treatment.
This Laboratory Grown Diamond was created by High Pressure High Temperature (HPHT) growth process.
Type II