




ELECTRONIC COPY

LABORATORY GROWN DIAMOND REPORT

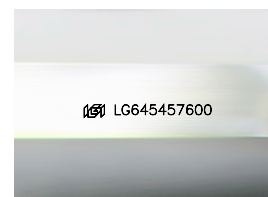
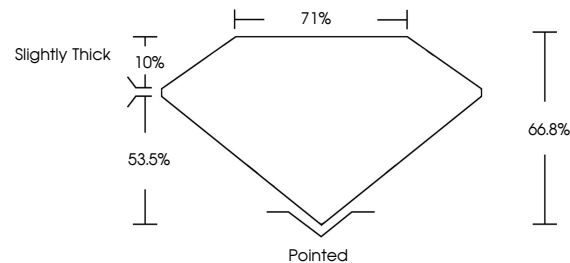
LG645457600
Report verification at igi.org

July 29, 2024	
IGI Report Number	LG645457600
Description	LABORATORY GROWN DIAMOND
Shape and Cutting Style	PRINCESS CUT
Measurements	12.38 X 12.21 X 8.16 MM
GRADING RESULTS	
Carat Weight	11.01 CARATS
Color Grade	G
Clarity Grade	VS 1

ADDITIONAL GRADING INFORMATION

Polish	EXCELLENT
Symmetry	EXCELLENT
Fluorescence	NONE
Inscription(s)	 LG645457600
Comments: This Laboratory Grown Diamond was created by Chemical Vapor Deposition (CVD) growth process.	
Type IIa	

PROPORTIONS



Sample Image Used

COLOR

D E F G H I J Faint Very Light Light

CLARITY

IF	VVS ¹⁻²	VS ¹⁻²	SI ¹⁻²	I ¹⁻³
Internally Flawless	Very Very Slightly Included	Very Slightly Included	Slightly Included	Included



© IGI 2020, International Gemological Institute

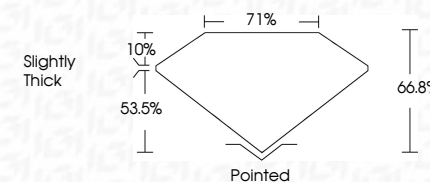
FD - 10 20

www.igi.org

LABORATORY GROWN DIAMOND REPORT



July 29, 2024	
IGI Report Number	LG645457600
Description	LABORATORY GROWN DIAMOND
Shape and Cutting Style	PRINCESS CUT
Measurements	12.38 X 12.21 X 8.16 MM
GRADING RESULTS	
Carat Weight	11.01 CARATS
Color Grade	G
Clarity Grade	VS 1



ADDITIONAL GRADING INFORMATION

Polish	EXCELLENT
Symmetry	EXCELLENT
Fluorescence	NONE
Inscription(s)	 LG6645457600
Comments: This Laboratory Grown Diamond was created by Chemical Vapor Deposition (CVD) growth process.	
Type IIa	



July 29, 2024
 IGI Report No LG645457600
 PRINCESS CIT

12.38 X 12.21 X 0.16 MM	11.01 CARATS	
Carat Weight	VS 1	Pointed
Color Grade	66.8%	EXCELLENT
Clarity Grade	71%	EXCELLENT
Depth		NONE
Table		
Girdle	Slightly Thick	
Culet		
Polish		
Symmetry		
Fluorescence		

Comments:
This Laboratory Grown Diamond was created by Chemical Vapor Deposition (CVD) growth process.