



ELECTRONIC COPY

LABORATORY GROWN DIAMOND REPORT

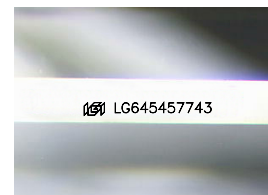
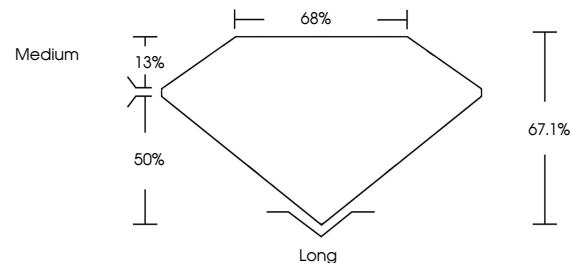
LG645457743
Report verification at [igi.org](https://www.igi.org)

July 26, 2024	
IGI Report Number	LG645457743
Description	LABORATORY GROWN DIAMOND
Shape and Cutting Style	EMERALD CUT
Measurements	7.79 X 5.29 X 3.55 MM
GRADING RESULTS	
Carat Weight	1.43 CARAT
Color Grade	E
Clarity Grade	VS 1

ADDITIONAL GRADING INFORMATION

Polish	EXCELLENT
Symmetry	EXCELLENT
Fluorescence	NONE
Inscription(s)	 LG645457743
Comments: This Laboratory Grown Diamond was created by Chemical Vapor Deposition (CVD) growth process.	
Type IIa	

PROPORTIONS



Sample Image Used

COLOR

D E F G H I J Faint Very Light Light

CLARITY

IF	VVS ¹⁻²	VS ¹⁻²	SI ¹⁻²	I ¹⁻³
Internally Flawless	Very Very Slightly Included	Very Slightly Included	Slightly Included	Included



© IGI 2020, International Gemological Institute

FD - 10 20

www.igi.org

LABORATORY GROWN DIAMOND REPORT



July 26, 2024	
IGI Report Number	LG645457743
Description	LABORATORY GROWN DIAMOND
Shape and Cutting Style	EMERALD CUT
Measurements	7.79 X 5.29 X 3.55 MM
GRADING RESULTS	
Carat Weight	1.43 CARAT
Color Grade	E
Clarity Grade	VS 1

ADDITIONAL GRADING INFORMATION

Polish	EXCELLENT
Symmetry	EXCELLENT
Fluorescence	NONE
Inscription(s)	 LG645457743
Comments: This Laboratory Grown Diamond was created by Chemical Vapor Deposition (CVD) growth process.	
Type IIa	



July 26, 2024
 IGI Report No LG645457743
 EMERALD CIT

	1.43 CARAT
	E
	Vs 1
	67.1%
	68%
	Medium
	Long
	EXCELLENT
	EXCELLENT
	NONE
	Fluorescence

Comments:
This Laboratory Grown Diamond was
created by Chemical Vapor Deposition
(CVD) growth process.