



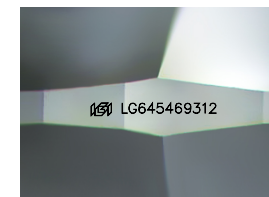
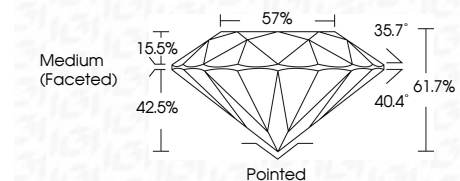
ELECTRONIC COPY

LG645469312
Report verification at igi.org



July 27, 2024
IGI Report Number LG645469312
Description LABORATORY GROWN DIAMOND
Shape and Cutting Style ROUND BRILLIANT
Measurements 8.27 - 8.31 X 5.11 MM

GRADING RESULTS
Carat Weight 2.17 CARATS
Color Grade F
Clarity Grade VVS 2
Cut Grade IDEAL



Sample Image Used

ADDITIONAL GRADING INFORMATION
Polish EXCELLENT
Symmetry EXCELLENT
Fluorescence NONE
Inscription(s) IGI LG645469312
Comments: This Laboratory Grown Diamond was created by Chemical Vapor Deposition (CVD) growth process. Type IIa



Table with 2 columns: Property and Value. Includes Carat Weight (2.17 CARATS), Color Grade (F), Clarity Grade (VVS 2), Depth (61.7%), Table (57%), Cut Grade (IDEAL), and Polish (EXCELLENT).

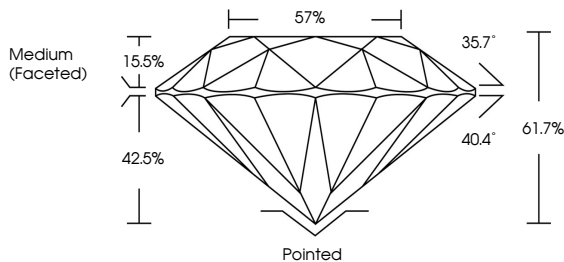
July 27, 2024
IGI Report Number LG645469312
Description LABORATORY GROWN DIAMOND
Shape and Cutting Style ROUND BRILLIANT
Measurements 8.27 - 8.31 X 5.11 MM

GRADING RESULTS
Carat Weight 2.17 CARATS
Color Grade F
Clarity Grade VVS 2
Cut Grade IDEAL

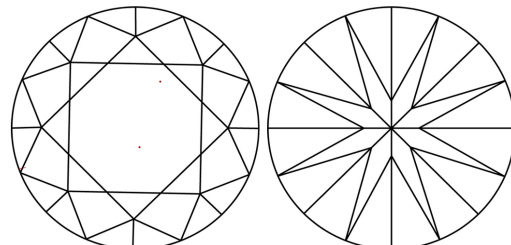
ADDITIONAL GRADING INFORMATION
Polish EXCELLENT
Symmetry EXCELLENT
Fluorescence NONE
Inscription(s) IGI LG645469312

Comments: This Laboratory Grown Diamond was created by Chemical Vapor Deposition (CVD) growth process. Type IIa

PROPORTIONS



CLARITY CHARACTERISTICS



KEY TO SYMBOLS
Red symbols indicate internal characteristics.
Green symbols indicate external characteristics.

COLOR scale: D, E, F, G, H, I, J, Faint, Very Light, Light

CLARITY scale: IF, VVS 1-2, VS 1-2, SI 1-2, I 1-3, Internally Flawless, Very Very Slightly Included, Very Slightly Included, Slightly Included, Included

