



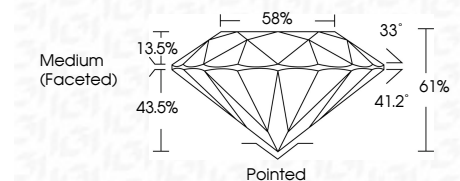
ELECTRONIC COPY

LG646472621
Report verification at igi.org



August 6, 2024
IGI Report Number LG646472621
Description LABORATORY GROWN DIAMOND
Shape and Cutting Style ROUND BRILLIANT
Measurements 7.62 - 7.67 X 4.67 MM

GRADING RESULTS
Carat Weight 1.66 CARAT
Color Grade E
Clarity Grade VS 1
Cut Grade IDEAL



ADDITIONAL GRADING INFORMATION
Polish EXCELLENT
Symmetry EXCELLENT
Fluorescence NONE
Inscription(s) IGI LG646472621
Comments: This Laboratory Grown Diamond was created by Chemical Vapor Deposition (CVD) growth process. Type IIa



August 6, 2024
IGI Report No LG646472621
ROUND BRILLIANT
7.62 - 7.67 X 4.67 MM
1.66 CARAT
E
VS 1
IDEAL
61%
58%
Medium (Faceted)
Pointed
EXCELLENT
EXCELLENT
NONE
IGI LG646472621
Comments: This Laboratory Grown Diamond was created by Chemical Vapor Deposition (CVD) growth process. Type IIa

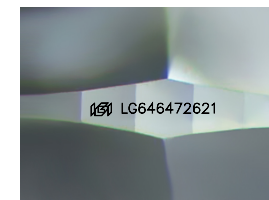
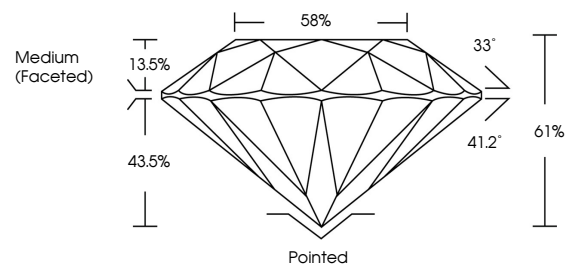
August 6, 2024
IGI Report Number LG646472621
Description LABORATORY GROWN DIAMOND
Shape and Cutting Style ROUND BRILLIANT
Measurements 7.62 - 7.67 X 4.67 MM

GRADING RESULTS
Carat Weight 1.66 CARAT
Color Grade E
Clarity Grade VS 1
Cut Grade IDEAL

ADDITIONAL GRADING INFORMATION
Polish EXCELLENT
Symmetry EXCELLENT
Fluorescence NONE
Inscription(s) IGI LG646472621

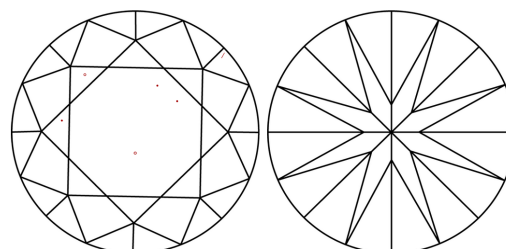
Comments: This Laboratory Grown Diamond was created by Chemical Vapor Deposition (CVD) growth process. Type IIa

PROPORTIONS



Sample Image Used

CLARITY CHARACTERISTICS



KEY TO SYMBOLS

Red symbols indicate internal characteristics.
Green symbols indicate external characteristics.

COLOR

D E F G H I J Faint Very Light Light

CLARITY

IF VS 1-2 VS 1-2 SI 1-2 I 1-3
Internally Flawless Very Very Slightly Included Very Slightly Included Slightly Included Included

