



ELECTRONIC COPY

LG648408575
Report verification at igi.org



August 18, 2024

IGI Report Number **LG648408575**

Description **LABORATORY GROWN DIAMOND**

Shape and Cutting Style **PRINCESS CUT**

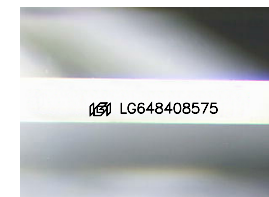
Measurements **6.85 X 6.63 X 4.88 MM**

GRADING RESULTS

Carat Weight **2.02 CARATS**

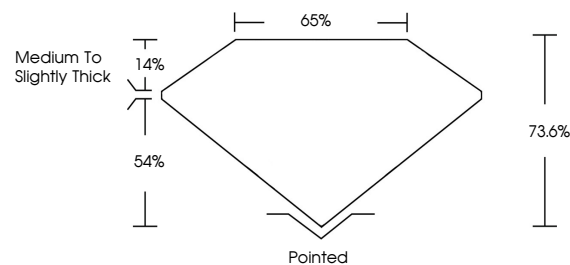
Color Grade **E**

Clarity Grade **VS 1**

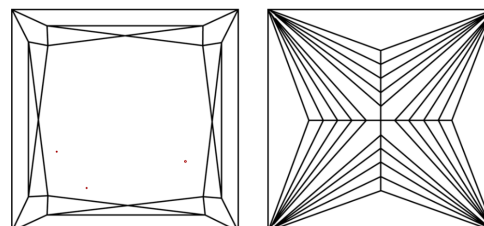


Sample Image Used

PROPORTIONS



CLARITY CHARACTERISTICS



KEY TO SYMBOLS

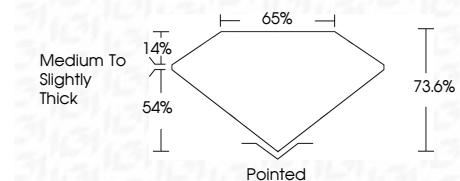
Red symbols indicate internal characteristics.
Green symbols indicate external characteristics.

COLOR

D E F G H I J Faint Very Light Light

CLARITY

| | | | | |
|---------------------|-----------------------------|------------------------|-------------------|------------------|
| IF | VS ¹⁻² | VS ¹⁻² | SI ¹⁻² | I ¹⁻³ |
| Internally Flawless | Very Very Slightly Included | Very Slightly Included | Slightly Included | Included |



ADDITIONAL GRADING INFORMATION

Polish **EXCELLENT**

Symmetry **VERY GOOD**

Fluorescence **NONE**

Inscription(s) **IGI LG648408575**

Comments: This Laboratory Grown Diamond was created by Chemical Vapor Deposition (CVD) growth process. Type IIa



IGI



August 18, 2024
IGI Report No. LG648408575
PRINCESS CUT

6.85 X 6.63 X 4.88 MM

2.02 CARATS
E

Carat Weight
Color Grade
Clarity Grade
Depth
Table
Girdle
Medium to Slightly Thick

73.6%
54%

Pointed
EXCELLENT
VERY GOOD
NONE
IGI LG648408575

Culet
Polish
Symmetry
Fluorescence
Inscription(s)

Comments: This Laboratory Grown Diamond was created by Chemical Vapor Deposition (CVD) growth process. Type IIa