



**ELECTRONIC COPY**

LG648454137  
Report verification at igi.org

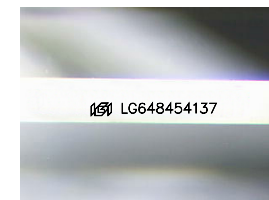


August 21, 2024  
IGI Report Number **LG648454137**  
Description **LABORATORY GROWN DIAMOND**

Shape and Cutting Style **EMERALD CUT**  
Measurements **14.98 X 9.53 X 6.02 MM**

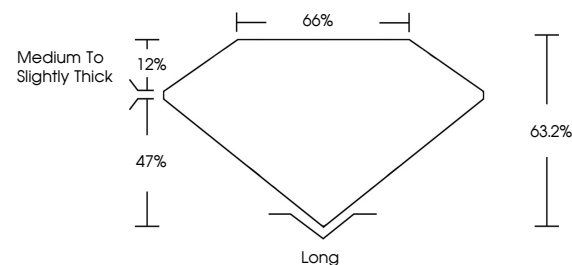
**GRADING RESULTS**

Carat Weight **9.05 CARATS**  
Color Grade **F**  
Clarity Grade **VS 2**

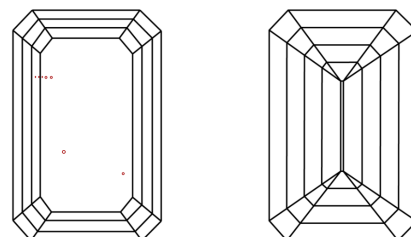


Sample Image Used

**PROPORTIONS**



**CLARITY CHARACTERISTICS**



**KEY TO SYMBOLS**

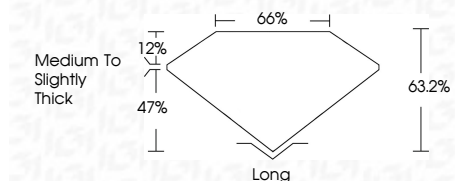
Red symbols indicate internal characteristics.  
Green symbols indicate external characteristics.

**COLOR**

D E F G H I J Faint Very Light Light

**CLARITY**

IF	VS <sup>1-2</sup>	VS <sup>1-2</sup>	SI <sup>1-2</sup>	I <sup>1-3</sup>
Internally Flawless	Very Very Slightly Included	Very Slightly Included	Slightly Included	Included



**ADDITIONAL GRADING INFORMATION**

Polish **EXCELLENT**  
Symmetry **EXCELLENT**  
Fluorescence **NONE**  
Inscription(s) **IGI LG648454137**  
Comments: This Laboratory Grown Diamond was created by Chemical Vapor Deposition (CVD) growth process. Type IIa



**IGI**



August 21, 2024  
IGI Report No. **LG648454137**  
**EMERALD CUT**  
14.98 X 9.53 X 6.02 MM  
9.05 CARATS  
F  
VS 2  
63.2%  
47%  
Medium to Slightly Thick  
Long  
EXCELLENT  
EXCELLENT  
NONE  
IGI LG648454137  
Comments: This Laboratory Grown Diamond was created by Chemical Vapor Deposition (CVD) growth process. Type IIa