



ELECTRONIC COPY

LG648463485
Report verification at igi.org



August 30, 2024
IGI Report Number **LG648463485**
Description **LABORATORY GROWN DIAMOND**
Shape and Cutting Style **CUT CORNERED
RECTANGULAR MODIFIED
BRILLIANT**
Measurements **11.55 X 8.24 X 5.74 MM**
GRADING RESULTS
Carat Weight **5.25 CARATS**
Color Grade **FANCY VIVID YELLOW**
Clarity Grade **VS 2**

August 30, 2024
IGI Report Number **LG648463485**
Description **LABORATORY GROWN DIAMOND**
Shape and Cutting Style **CUT CORNERED RECTANGULAR
MODIFIED BRILLIANT**
Measurements **11.55 X 8.24 X 5.74 MM**

GRADING RESULTS

Carat Weight **5.25 CARATS**
Color Grade **FANCY VIVID YELLOW**
Clarity Grade **VS 2**

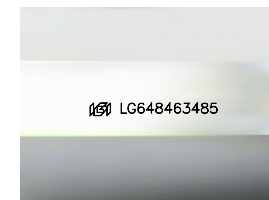
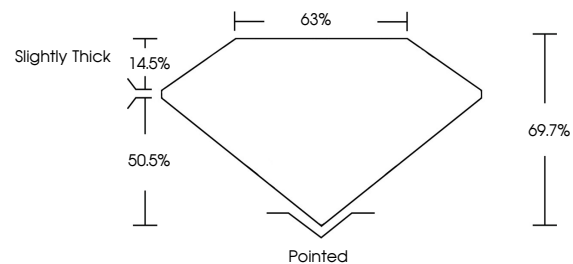
ADDITIONAL GRADING INFORMATION

Polish **EXCELLENT**
Symmetry **EXCELLENT**
Fluorescence **VERY SLIGHT**
Inscription(s) **IGI LG648463485**

Comments: This Laboratory Grown Diamond was created by Chemical Vapor Deposition (CVD) growth process.
Indications of post-growth treatment.

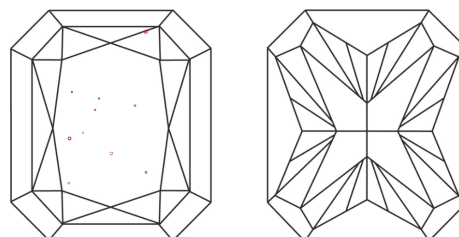
Secondary color: Grey

PROPORTIONS



Sample Image Used

CLARITY CHARACTERISTICS



KEY TO SYMBOLS

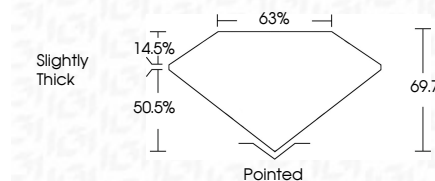
Red symbols indicate internal characteristics.
Green symbols indicate external characteristics.

COLOR

D E F G H I J Faint Very Light Light

CLARITY

IF	VS ¹⁻²	VS ¹⁻²	SI ¹⁻²	I ¹⁻³
Internally Flawless	Very Very Slightly Included	Very Slightly Included	Slightly Included	Included



ADDITIONAL GRADING INFORMATION

Polish **EXCELLENT**
Symmetry **EXCELLENT**
Fluorescence **VERY SLIGHT**
Inscription(s) **IGI LG648463485**
Comments: This Laboratory Grown Diamond was created by Chemical Vapor Deposition (CVD) growth process.
Indications of post-growth treatment.
Secondary color: Grey



August 30, 2024
IGI Report No LG648463485
CUT CORNERED RECT. MODIFIED BRILLIANT
11.55 X 8.24 X 5.74 MM
5.25 CARATS
FANCY VIVID YELLOW
VS 2
69.7%
63%
Slightly Thick
Pointed
EXCELLENT
EXCELLENT
VERY SLIGHT
IGI LG648463485
Comments: This Laboratory Grown Diamond was created by Chemical Vapor Deposition (CVD) growth process.
Indications of post-growth treatment.
Secondary color: Grey