



ELECTRONIC COPY

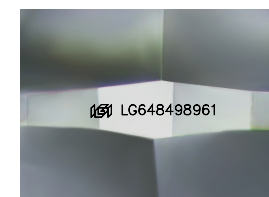
LG648498961
Report verification at igi.org



August 21, 2024
IGI Report Number **LG648498961**
Description **LABORATORY GROWN DIAMOND**
Shape and Cutting Style **CUSHION BRILLIANT**
Measurements **8.55 X 7.22 X 4.86 MM**

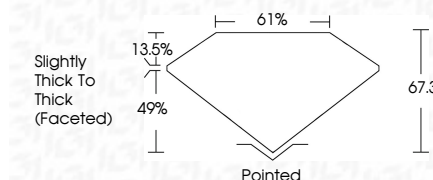
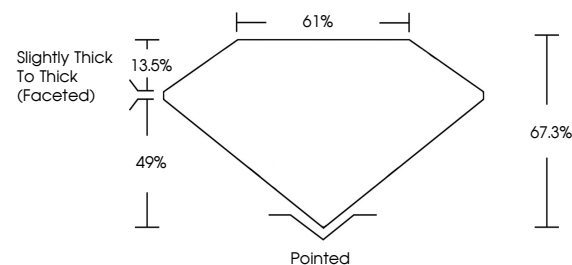
GRADING RESULTS

Carat Weight **2.45 CARATS**
Color Grade **D**
Clarity Grade **VS 1**



Sample Image Used

PROPORTIONS



ADDITIONAL GRADING INFORMATION

Polish **EXCELLENT**
Symmetry **EXCELLENT**
Fluorescence **NONE**
Inscription(s) **IGI LG648498961**
Comments: This Laboratory Grown Diamond was created by Chemical Vapor Deposition (CVD) growth process. Type IIa



COLOR

D E F G H I J Faint Very Light Light

CLARITY

IF	VS ¹⁻²	SI ¹⁻²	I ¹⁻³
Internally Flawless	Very Very Slightly Included	Very Slightly Included	Slightly Included



August 21, 2024
IGI Report No **LG648498961**
CUSHION BRILLIANT
8.55 X 7.22 X 4.86 MM
Carat Weight **2.45 CARATS**
Color Grade **D**
Clarity Grade **VS 1**
Depth **67.3%**
Table **61%**
Girdle **Slightly Thick To Thick (Faceted)**
Culet **Pointed**
Polish **EXCELLENT**
Symmetry **EXCELLENT**
Fluorescence **NONE**
Inscription(s) **IGI LG648498961**
Comments: This Laboratory Grown Diamond was created by Chemical Vapor Deposition (CVD) growth process. Type IIa