

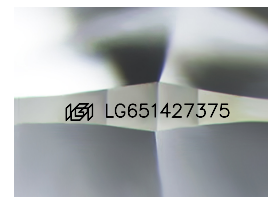
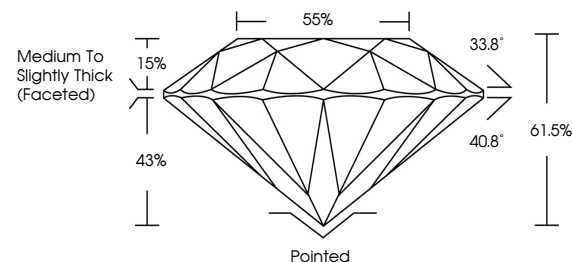


ELECTRONIC COPY

LABORATORY GROWN DIAMOND REPORT

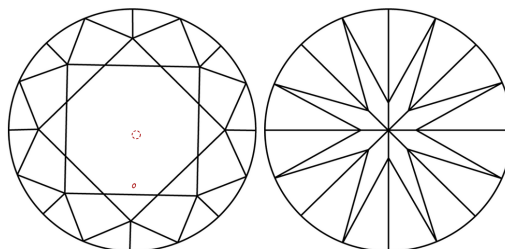
LG651427375
Report verification at lgi.org

PROPORTIONS



Sample Image Used

CLARITY CHARACTERISTICS



KEY TO SYMBOLS

Red symbols indicate internal characteristics.
Green symbols indicate external characteristics.

COLOR

D E F G H I J Faint Very Light Light

CLARITY

IF WS¹⁻² VS¹⁻² S¹⁻² |¹⁻³

Internally Flawless	Very Very Slightly Included	Very Slightly Included	Slightly Included	Included
------------------------	--------------------------------	---------------------------	----------------------	----------

LABORATORY GROWN DIAMOND REPORT



December 10, 2024

IGI Report Number **LG651427375**Description **LABORATORY GROWN DIAMOND**Shape and Cutting Style **ROUND BRILLIANT**

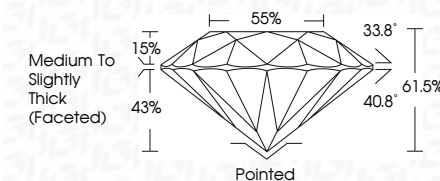
Measurements **7.63 - 7.66 X 4.70 MM**

GRADING RESULTS

Carat Weight **1.67 CARAT**

Color Grade E

Clarity Grade VS 1

Cut Grade **IDEAL**

ADDITIONAL GRADING INFORMATION

Polish **EXCELLENT**Symmetry **EXCELLENT**Fluorescence **NONE**Inscription(s) LG651427375

Comments: As Grown - No indication of post-growth treatment.

This Laboratory Grown Diamond was created by High Pressure High Temperature (HPHT) growth process.



© IGI 2020, International Gemological Institute

FD - 10 20

www.igi.org



THIS DOCUMENT WAS PRODUCED WITH THE FOLLOWING SECURITY MEASURES: SPECIAL DOCUMENT PAPER, INK SCREENS, WATERMARK, BACKGROUND DESIGNS, HOLOGRAM AND OTHER SECURITY FEATURES NOT LISTED AND DO EXCEED DOCUMENT SECURITY INDUSTRY GUIDELINE

December 10, 2024
IGI Report No LG65147
ROUND BRILLIANT

7.63 - 7.66 x 4.70 MM	Carat Weight	1.67 CARAT
	Color Grade	E
	Clarity Grade	VS 1
	Cut Grade	IDPAL
	Depth	61.65%
	Table	55%
	Girdle	Medium to Slightly Thick (Faceted)
	Culet	Pointed
	Polish	Excellent
	Symmetry	Excellent
	Fluorescence	None
	Report#	4561 12451 023275

Comments:
As Grown - No indication of post-growth treatment
This Laboratory Grown Diamond was created by High Pressure High Temperature (HPHT) growth process.