



ELECTRONIC COPY

LABORATORY GROWN DIAMOND REPORT

September 5, 2024	
IGI Report Number	LG651439656
Description	LABORATORY GROWN DIAMOND
Shape and Cutting Style	OVAL BRILLIANT
Measurements	9.10 X 6.32 X 3.85 MM

GRADING RESULTS

Carat Weight	1.39 CARAT
Color Grade	D
Clarity Grade	VS 2

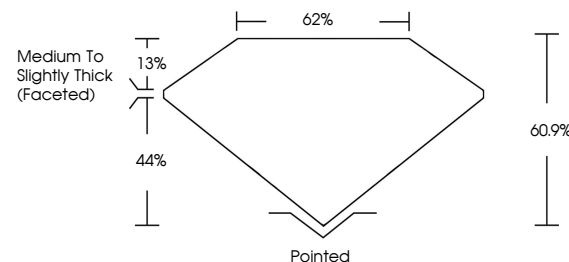
ADDITIONAL GRADING INFORMATION

Polish	EXCELLENT
Symmetry	EXCELLENT
Fluorescence	NONE
Inscription(s)	15 LG651439656

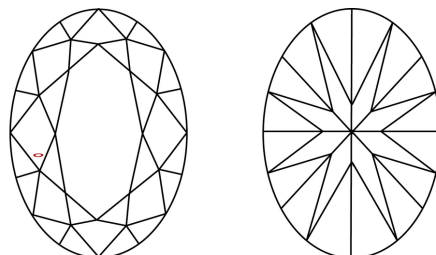
Comments: This Laboratory Grown Diamond was created by Chemical Vapor Deposition (CVD) growth process.
Type IIa

LG651439656
Report verification at lgi.org

PROPORTIONS



CLARITY CHARACTERISTICS



KEY TO SYMBOLS

Red symbols indicate internal characteristics.
Green symbols indicate external characteristics.

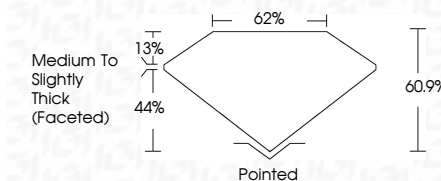
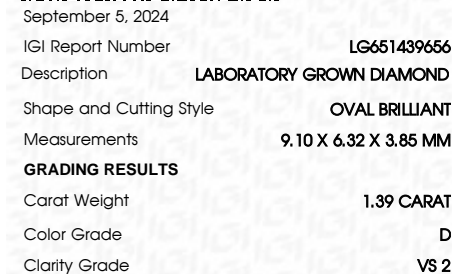


COLOR

D E F G H I J Faint Very Light Light

CLARITY

IF	VS ¹⁻²	VS ¹⁻²	SI ¹⁻²	I ¹⁻³
Internally Flawless	Very Very Slightly Included	Very Slightly Included	Slightly Included	Included



ADDITIONAL GRADING INFORMATION

Polish	EXCELLENT
Symmetry	EXCELLENT
Fluorescence	NONE
Inscription(s)	 LG651439656
<p>Comments: This Laboratory Grown Diamond was created by Chemical Vapor Deposition (CVD) growth process.</p> <p>Type IIa</p>	



© IGI 2020, International Gemological Institute

FD - 10 20



September 5, 2024
GI Report No LG651439656

1.39 CARAT	D	VS 2	60.9%	62%	Medium To Slightly Thick (faceted)	Pointed	EXCELLENT	NONE	None (Casey reports)
2.10 X 6.32 X 3.85 MM	Color Weight	Carat Weight	Color Grade	Clarity Grade	Cutlet	Polish	Symmetry	Fluorescence	Comments
1.39 CARAT	D	VS 2	60.9%	62%	Medium To Slightly Thick (faceted)	Pointed	EXCELLENT	NONE	None (Casey reports)

Comments:
This Laboratory Grown Diamond was
created by Chemical Vapor Deposition
(CVD) growth process.

www.igi.org