



**ELECTRONIC COPY**

LG651495247  
Report verification at igi.org



September 12, 2024

IGI Report Number **LG651495247**

Description **LABORATORY GROWN DIAMOND**

Shape and Cutting Style **CUSHION BRILLIANT**

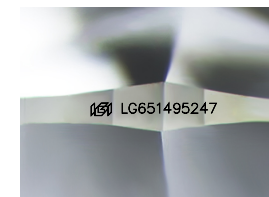
Measurements **8.03 X 5.85 X 3.94 MM**

**GRADING RESULTS**

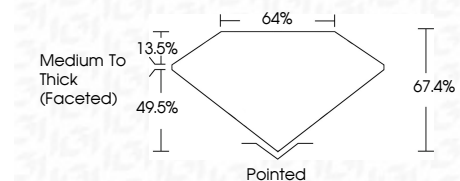
Carat Weight **1.52 CARAT**

Color Grade **E**

Clarity Grade **VS 1**



Sample Image Used



**ADDITIONAL GRADING INFORMATION**

Polish **EXCELLENT**

Symmetry **EXCELLENT**

Fluorescence **NONE**

Inscription(s) **IGI LG651495247**

Comments: As Grown - No indication of post-growth treatment.

This Laboratory Grown Diamond was created by High Pressure High Temperature (HPHT) growth process.

Type II



**IGI**

|                          |                           |                       |             |               |       |       |                           |         |           |           |              |                 |
|--------------------------|---------------------------|-----------------------|-------------|---------------|-------|-------|---------------------------|---------|-----------|-----------|--------------|-----------------|
| September 12, 2024       | IGI Report No LG651495247 | 1.52 CARAT            | E           | VS 1          | 67.4% | 64%   | Medium To Thick (Faceted) | Pointed | EXCELLENT | EXCELLENT | NONE         | IGI LG651495247 |
| <b>CUSHION BRILLIANT</b> |                           | 8.03 X 5.85 X 3.94 MM | Color Grade | Clarity Grade | Table | Depth | Girdle                    | Culet   | Polish    | Symmetry  | Fluorescence | Inscription(s)  |

Comments: As Grown - No indication of post-growth treatment.  
This Laboratory Grown Diamond was created by High Pressure High Temperature (HPHT) growth process.  
Type II

September 12, 2024  
IGI Report Number **LG651495247**  
Description **LABORATORY GROWN DIAMOND**  
Shape and Cutting Style **CUSHION BRILLIANT**  
Measurements **8.03 X 5.85 X 3.94 MM**

**GRADING RESULTS**

Carat Weight **1.52 CARAT**

Color Grade **E**

Clarity Grade **VS 1**

**ADDITIONAL GRADING INFORMATION**

Polish **EXCELLENT**

Symmetry **EXCELLENT**

Fluorescence **NONE**

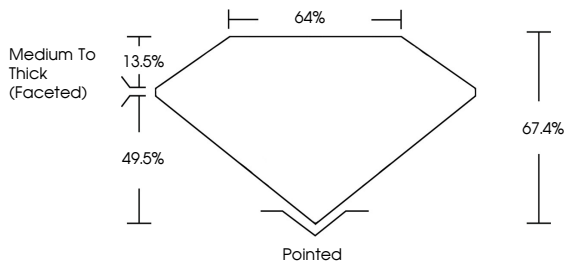
Inscription(s) **IGI LG651495247**

Comments: As Grown - No indication of post-growth treatment.

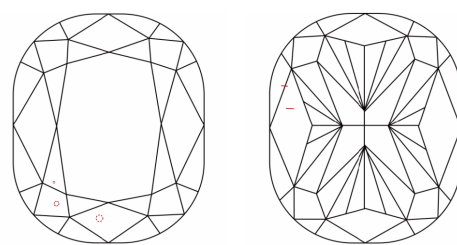
This Laboratory Grown Diamond was created by High Pressure High Temperature (HPHT) growth process.

Type II

**PROPORTIONS**



**CLARITY CHARACTERISTICS**



**KEY TO SYMBOLS**

Red symbols indicate internal characteristics.  
Green symbols indicate external characteristics.

**COLOR**

|   |   |   |   |   |   |   |       |            |       |
|---|---|---|---|---|---|---|-------|------------|-------|
| D | E | F | G | H | I | J | Faint | Very Light | Light |
|---|---|---|---|---|---|---|-------|------------|-------|

**CLARITY**

|                     |                             |                        |                   |                  |
|---------------------|-----------------------------|------------------------|-------------------|------------------|
| IF                  | VS <sup>1-2</sup>           | VS <sup>1-2</sup>      | SI <sup>1-2</sup> | I <sup>1-3</sup> |
| Internally Flawless | Very Very Slightly Included | Very Slightly Included | Slightly Included | Included         |