



ELECTRONIC COPY

LABORATORY GROWN DIAMOND REPORT

September 19, 2024  
IGI Report Number LG652402706  
Description LABORATORY GROWN DIAMOND  
Shape and Cutting Style CUT CORNERED RECTANGULAR MODIFIED BRILLIANT  
Measurements 8.47 X 6.10 X 4.36 MM

GRADING RESULTS

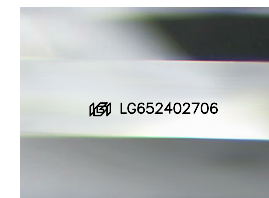
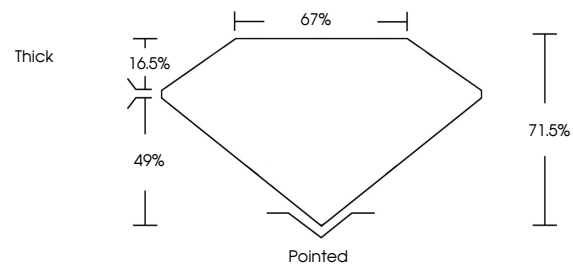
Carat Weight 2.07 CARATS  
Color Grade F  
Clarity Grade VS 2

ADDITIONAL GRADING INFORMATION

Polish EXCELLENT  
Symmetry EXCELLENT  
Fluorescence NONE  
Inscription(s) IGI LG652402706

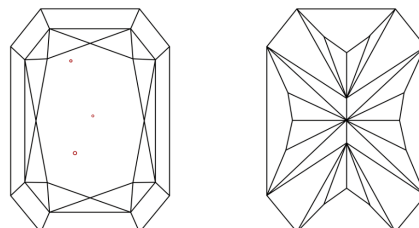
Comments: This Laboratory Grown Diamond was created by Chemical Vapor Deposition (CVD) growth process.  
Type IIa

PROPORTIONS



Sample Image Used

CLARITY CHARACTERISTICS



KEY TO SYMBOLS

Red symbols indicate internal characteristics.  
Green symbols indicate external characteristics.

COLOR

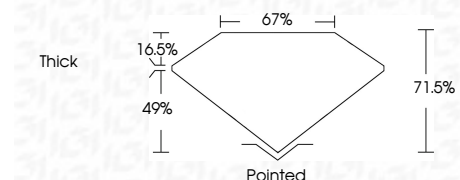
D E F G H I J Faint Very Light Light

CLARITY

IF	VS 1-2	VS 1-2	SI 1-2	I 1-3
Internally Flawless	Very Very Slightly Included	Very Slightly Included	Slightly Included	Included



September 19, 2024  
IGI Report Number LG652402706  
Description LABORATORY GROWN DIAMOND  
Shape and Cutting Style CUT CORNERED RECTANGULAR MODIFIED BRILLIANT  
Measurements 8.47 X 6.10 X 4.36 MM  
GRADING RESULTS  
Carat Weight 2.07 CARATS  
Color Grade F  
Clarity Grade VS 2



ADDITIONAL GRADING INFORMATION

Polish EXCELLENT  
Symmetry EXCELLENT  
Fluorescence NONE  
Inscription(s) IGI LG652402706  
Comments: This Laboratory Grown Diamond was created by Chemical Vapor Deposition (CVD) growth process.  
Type IIa



IGI



September 19, 2024  
IGI Report No LG652402706  
CUT CORNERED RECT. MODIFIED BRILLIANT  
8.47 X 6.10 X 4.36 MM  
2.07 CARATS  
F  
VS 2  
71.6%  
67%  
Thick  
Pointed  
EXCELLENT  
EXCELLENT  
NONE  
IGI LG652402706

Comments: This Laboratory Grown Diamond was created by Chemical Vapor Deposition (CVD) growth process.  
Type IIa