



ELECTRONIC COPY

LG652429595
Report verification at igi.org



September 12, 2024

IGI Report Number **LG652429595**

Description **LABORATORY GROWN DIAMOND**

Shape and Cutting Style **CUT CORNERED
RECTANGULAR MODIFIED
BRILLIANT**

Measurements **9.98 X 7.17 X 4.78 MM**

GRADING RESULTS

Carat Weight **2.93 CARATS**

Color Grade **E**

Clarity Grade **VS 1**

September 12, 2024
IGI Report Number **LG652429595**
Description **LABORATORY GROWN DIAMOND**
Shape and Cutting Style **CUT CORNERED RECTANGULAR
MODIFIED BRILLIANT**
Measurements **9.98 X 7.17 X 4.78 MM**

GRADING RESULTS

Carat Weight **2.93 CARATS**

Color Grade **E**

Clarity Grade **VS 1**

ADDITIONAL GRADING INFORMATION

Polish **EXCELLENT**

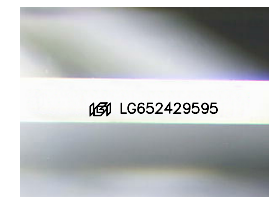
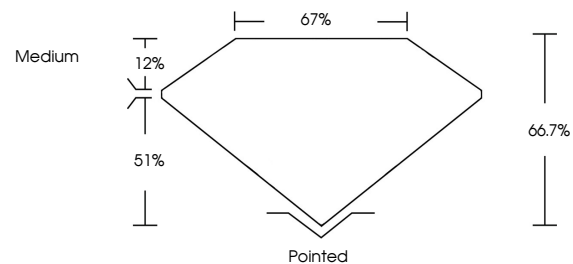
Symmetry **EXCELLENT**

Fluorescence **NONE**

Inscription(s) **IGI LG652429595**

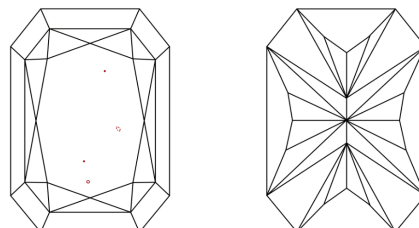
Comments: This Laboratory Grown Diamond was created by Chemical Vapor Deposition (CVD) growth process.
Type IIa

PROPORTIONS



Sample Image Used

CLARITY CHARACTERISTICS



KEY TO SYMBOLS

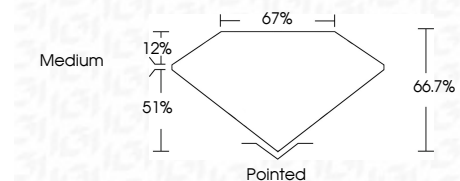
Red symbols indicate internal characteristics.
Green symbols indicate external characteristics.

COLOR

D E F G H I J Faint Very Light Light

CLARITY

IF	VS ¹⁻²	VS ¹⁻²	SI ¹⁻²	I ¹⁻³
Internally Flawless	Very Very Slightly Included	Very Slightly Included	Slightly Included	Included



ADDITIONAL GRADING INFORMATION

Polish **EXCELLENT**

Symmetry **EXCELLENT**

Fluorescence **NONE**

Inscription(s) **IGI LG652429595**

Comments: This Laboratory Grown Diamond was created by Chemical Vapor Deposition (CVD) growth process.
Type IIa



IGI



September 12, 2024
IGI Report No. LG652429595
CUT CORNERED RECT. MODIFIED BRILLIANT
9.98 X 7.17 X 4.78 MM
2.93 CARATS
E
VS 1
66.7%
67%
Medium
Pointed
EXCELLENT
EXCELLENT
NONE
IGI LG652429595
Comments: This Laboratory Grown Diamond was created by Chemical Vapor Deposition (CVD) growth process.
Type IIa